



Height gauges



Monitoring operations in the manufacturing process

Why carry the workpieces from a distant measuring room when they can be inspected almost on the spot?

The vertical measurement systems are 1D instruments, usually placed on a granite table, defining a reference plane, devoted to the determination of various characteristics such as height, thickness, depth, internal/external diameter,... depending on the configuration of the associated measuring probe.

The range of TESA height gauges is primarily distinguished by the variety of models available, but also by the many possibilities for applications where these instruments offer genuine performance solutions. Designed for process control of manufacturing operations or directly on a machine tool, they also provide a safe measurement when parts of the dimensions are critical.



A complete family that meets the needs of demanding users

TESA-HITE & TESA-HITE MAGNA range

The height gauges of this range are specially designed for workshop measurement, where ensuring quality metrology is in generally complicated. These instruments are often subject to harsh environmental factors such as temperature, projections, etc.

MICRO- HITE range

These high-end 2D height gauges are intuitive due to the clear and refined user philosophy of their embedded software. They are reliable and robust universal machines, developed for workshops that can be integrated as close as possible to the user. Multifunctional, they are a metrological “multi-user” asset, that replaces the most conventional measuring tools.

μ-HITE range

Compact measuring station, the perfect compromise for measuring small parts or applications requiring a low measuring force. Based on the comparator principle (coaxial measuring according to the ABBE principle) it achieves extremely fine precision, a characteristic that is often essential for laboratory use.



Height gauges

The safety of a quality product, guaranteed benefits

Since their development phase, TESA height gauges are subject to strict internal standards aligned with the most restrictive national standards. Thanks to this close monitoring, all TESA height gauges meet the QUALITY requirements that we strive to keep as sharp as possible.

For this reason, our measurement laboratory meets the requirements for SCS accreditation (Swiss Calibration Service). Each instrument in this product line is therefore delivered with a free SCS certificate, making our products meet the requirements of many central laboratories through ILAC cooperation (International Laboratory Accreditation & Cooperation). Any hidden additional extra cost due to a re-certification of the instrument after purchase is avoided.



Calibration laboratory for TESA height gauges

A philosophy of use for everyone

With their refined user interface, ergonomic panel and contextual help button, the TESA height gauges are designed to be quickly accessible to any user profile.

The required learning time is short and autonomy of use is often achieved in less than a day.



Two panels, one philosophy
For TESA-HITE (left) and for MICRO-HITE or μ -HITE (right)

MICRO-HITE+M



TESA-HITE



Height gauges

TESA μ -HITE





		μ-HITE	TESA-HITE MAGNA		TESA-HITE	
Part number		00730502* 00730503*	00730082	00730083	00730084	00730085
Type	Manuel displacement		•	•	•	•
	Motorised displacement	•				
Precision	Max. permissible errors μm, L in mm	Axial: ≤1 Offset: ≤2	≤8	≤8	2,5+4L/1000	2,5+4L/1000
	Repeatability (2σ), μm	Surface: ≤0,5 Arc: ≤1	Surface: ≤3 Arc: ≤5	Surface: ≤3 Arc: ≤5	Surface: ≤2 Arc: ≤3	Surface: ≤2 Arc: ≤3
	SCS Certificate	•	•	•	•	•
Instrument	Size, mm	100	400	700	400	700
	Air cushion				•	•
	Fine adjustment		•	•	•	•
	Adjustable panel arm					
Accessories	Probe support Ø 6 mm		•	•	•	•
	Axial probe holder for insert M2,5	•				
	Ball tip insert, Ø 5 mm, tungsten carbide		•	•	•	•
	Axial ball tip insert, Ø 3 mm, tungsten carbide ball tip	•				
	Masterpiece 6,35 mm / .25 in	•	•	•		
Power supply	Masterpiece 12,7 mm / .5 in	•			•	•
	Integrated rechargeable battery		•	•	•	•
	Rechargeable interchangeable battery					
	Charger	•	•	•	•	•
Functionalities	Power cables EU, US, UK	•	•	•	•	•
	Single probing, culmination point	•	•	•	•	•
	Double probing, bore, axis, groove, rib	•	•	•	•	•
	Perpendicularity, straightness				With external display	With external display
	Min, max, delta	•	•	•	•	•
	Angle	•				
	2D	•				
	Integrated calculator, configurable functions	•				
	Reference(s)	2	1	1	1	1
	Distance, midpoint	•	•	•	•	•
	Tolerancing, Go-NoGo report	•				
	Context-based help	•	•	•	•	•
	Preset	•	•	•	•	•
	Programs' management	•				
	Manual or automatic data transmission	•	•	•	•	•
	Data backup on USB stick (txt)	•				
	Sending data through TLC port	•	•	•	•	•
Screenshot	•					
Customizable interface			•	•	•	•

*The metrological specifications for these instruments are valid only for the measuring head and not for the complete system.

Height gauges



MICRO-HITE						MICRO-HITE+M		
00730073	00730074	00730075	00730076	00730077	00730078	00730079	00730080	00730081
.
2+2L/1000	2+2L/1000	2+2L/1000	2+2L/1000	2+2L/1000	2+2L/1000	1,8+2L/1000	1,8+2L/1000	1,8+2L/1000
Surface: ≤ 1 Arc: ≤ 1	Surface: ≤ 1 Arc: ≤ 1	Surface: ≤ 1 Arc: ≤ 1	Surface: ≤ 1 Arc: ≤ 1	Surface: ≤ 1 Arc: ≤ 1	Surface: ≤ 1 Arc: ≤ 1	Surface: ≤ 0,5 Arc: ≤ 1	Surface: ≤ 0,5 Arc: ≤ 1	Surface: ≤ 0,5 Arc: ≤ 1
.
350	600	900	350	600	900	350	600	900
.
.
.
.
.
.
.
.
.
.
.
.
.
.
.
.
.
2	2	2	2	2	2	2	2	2
.
.
.
.
.
.
.
.
.
.

MICRO-HITE

- **PANEL**
 - Hybrid with colour touch screen and keyboard
 - Refined keyboard for easy handling without confusion
 - Adjustable support for optimal reading of the screen at any time
 - **AUTONOMY**
 - Rechargeable interchangeable battery
 - Infinite operative with a backup battery
 - **MEASUREMENT**
 - Patented QUICKCENTER technology integrated to efficiently determine the culmination points
 - Advanced functions for a multi-task instrument, accessible to all users
 - Context-based help to avoid incorrect use and bad results
 - Clear results to decrease possible errors due to bad interpretation of the displayed results
 - **INSTRUMENT**
 - Robust construction to ensure longevity and stability of results over time
 - **DATA MANAGEMENT**
 - Sending values to computer via TLC port
- Automatic creation of pdf reports or txt file on USB stick
- Data printing via USB printer
- **SCS CALIBRATION CERTIFICATE**
 - Free SCS Certificate supplied with purchase to avoid any additional extra costs for calibration of the instrument directly after purchase



00730074

Standard	Factory standard
Resolution	0,0001 / 0,001 / 0,01 mm .00001 / .0001 / .001 in
Zero	Fixed
Coefficient of linear expansion	11,5 x 10 ⁻⁶ K ⁻¹
Material	Base and frame: cast iron
Panel	Colour & touch screen, 84 x 152 mm Keyboard: backlit
Weight	Model 350: 33 kg Model 600: 37 kg Model 900: 45 kg
Power supply	Power connection Rechargeable interchangeable battery
Data output(s)	TLC, USB
Function(s)	Measuring probe can be manually displaced with a displacement wheel Air cushion system
Execution	Manual
Autonomy	8 hours (with a battery block) Infinite (with 2 battery blocks)
Included in delivery	SCS calibration certificate Declaration of conformity
Measuring force	1,6 ± 0,25 N
Units	mm / in

2D height gauges

Part number	Designation	Measuring range mm	Max. perm. errors μm	Repeatability limit μm	Max. perm. perp. error μm	Measuring force N	Weight kg	Fine adjustment
00730073	MH 350	365	2 + 2L	On surface: ≤ 1 On arc: ≤ 1	Frontal: 5 Lateral: 5	$1,6 \pm 0,25$	33	Without
00730074	MH 600	615	2 + 2L	On surface: ≤ 1 On arc: ≤ 1	Frontal: 5 Lateral: 5	$1,6 \pm 0,25$	37	Without
00730075	MH 900	920	2 + 2L	On surface: ≤ 1 On arc: ≤ 1	Frontal: 9 Lateral: 9	$1,6 \pm 0,25$	45	Without
00730076	MH 350F	365	2 + 2L	On surface: ≤ 1 On arc: ≤ 1	Frontal: 5 Lateral: 5	$1,6 \pm 0,25$	33	With
00730077	MH 600F	615	2 + 2L	On surface: ≤ 1 On arc: ≤ 1	Frontal: 7 Lateral: 7	$1,6 \pm 0,25$	37	With
00730078	MH 900F	920	2 + 2L	On surface: ≤ 1 On arc: ≤ 1	Frontal: 9 Lateral: 9	$1,6 \pm 0,25$	45	With

Accessories

Part number	Designation
00760222	Holder for accessories
00760140	IG13 probe + holder
00760235	USB printer
00760250	Thermal paper (4 rolls)
00760124	Practice piece
00760151	Dust cover, 350 mm
00760152	Dust cover, 600 mm
00760153	Dust cover, 900 mm
04981001	DATA-DIRECT software
04981002	STAT-EXPRESS software
DATA-VIEWER	Free data acquisition software
04760183	TLC-BLE Bluetooth® emitter + USB dongle receiver + 1,5 m extension cable set
04760184	TLC-BLE Bluetooth® emitter
04760185	USB receiver + 1,5 m extension cable
00760249	Cleaning liquid for granite table, 1 L
00760256	Rechargeable battery block
00760258	14 V charger + adapter
062473	MICRO-HITE 350 and MICRO-HITE+M 350 packaging
062474	MICRO-HITE 600 and MICRO-HITE+M 600 packaging
062475	MICRO-HITE 900 and MICRO-HITE+M 900 packaging



MICRO-HITE+M

- **PANEL**
 - Hybrid with colour touch screen and keyboard
 - Refined keyboard for easy handling without confusion
 - Adjustable support for optimal reading of the screen at any time
- **AUTONOMY**
 - Rechargeable interchangeable battery
 - Infinite operative with a backup battery
- **MEASUREMENT**
 - Patented QUICKCENTER technology integrated to efficiently determine the culmination points
 - Advanced functions for a multi-task instrument, accessible to all users
 - Context-based help to avoid incorrect use and bad results
 - Clear results to decrease possible errors due to bad interpretation of the displayed results
- **INSTRUMENT**
 - Robust construction to ensure longevity and stability of results over time
 - Intelligent hand-wheel that integrates the FEEL&MOVE technology for fast and precise probe positioning.
- **DATA MANAGEMENT**
 - Sending values to computer via TLC port
 - Automatic creation of pdf reports or txt file on USB stick
 - Data printing via USB printer
- **SCS CALIBRATION CERTIFICATE**
 - Free SCS Certificate supplied with purchase to avoid any additional extra costs for calibration of the instrument directly after purchase



00730080

Standard	Factory standard
Resolution	0,0001 / 0,001 / 0,01 mm .00001 / .0001 / .001 in
Zero	Fixed
Coefficient of linear expansion	11,5 x 10 ⁻⁶ K ⁻¹
Material	Base and frame: cast iron
Panel	Colour & touch screen, 84 x 152 mm Keyboard: backlit
Weight	Model 350: 33 kg Model 600: 37 kg Model 900: 45 kg
Power supply	Power connection Rechargeable interchangeable battery
Data output(s)	TLC, USB
Function(s)	Measuring probe can be displaced (motorised) with a displacement wheel Air cushion system
Execution	Motorised
Autonomy	8 hours (with a battery block) Infinite (with two battery blocks)
Included in delivery	SCS calibration certificate Declaration of conformity
Measuring force	1,6 ± 0,25 N
Units	mm / in

2D height gauges

Part number	Designation	Measuring range mm	Max. perm. errors μm	Repeatability limit μm	Max. perm. perp. error μm	Measuring force N	Weight kg
00730079	MH+M 350	365	1,8 + 2L	On surface: $\leq 0,5$ On arc: ≤ 1	Frontal: 5 Lateral: 5	$1,6 \pm 0,25$	33
00730080	MH+M 600	615	1,8 + 2L	On surface: $\leq 0,5$ On arc: ≤ 1	Frontal: 7 Lateral: 7	$1,6 \pm 0,25$	37
00730081	MH+M 900	920	1,8 + 2L	On surface: $\leq 0,5$ On arc: ≤ 1	Frontal: 9 Lateral: 9	$1,6 \pm 0,25$	45

Accessories

Part number	Designation
00760222	Holder for accessories
00760140	IG13 probe + holder
00760235	USB printer
00760250	Thermal paper (4 rolls)
00760124	Practice piece
00760151	Dust cover, 350 mm
00760152	Dust cover, 600 mm
00760153	Dust cover, 900 mm
04981001	DATA-DIRECT software
04981002	STAT-EXPRESS software
DATA-VIEWER	Free data acquisition software
04760183	TLC-BLE Bluetooth® emitter + USB dongle receiver + 1,5 m extension cable set
04760184	TLC-BLE Bluetooth® emitter
04760185	USB receiver + 1,5 m extension cable
00760249	Cleaning liquid for granite table, 1 L
00760256	Rechargeable battery block
00760258	14 V charger + adapter
062473	MICRO-HITE 350 and MICRO-HITE+M 350 packaging
062474	MICRO-HITE 600 and MICRO-HITE+M 600 packaging
062475	MICRO-HITE 900 and MICRO-HITE+M 900 packaging



TESA-HITE

- **PANEL**
 - Protected against the penetration of liquids or dust (IP65)
 - Big colour screen for better reading in dimly lit surroundings
 - Black display background for excellent contrast
 - Large numbers displayed on the screen (21 mm) for optimal readability
 - Keyboard with few buttons for easy learning without confusion
- **AUTONOMY**
 - Long battery life (60h) to avoid too frequent recharging
- **MEASURE**
 - Philosophy of use similar to tablets or smartphones
 - Quick access to the first measurement from start up (<4s) for a significant time saving
 - QUICKCENTER DYNAMIC technology integrated to efficiently determine the culmination points
 - Context-based help to avoid incorrect use and bad results
 - The interface can be customized according to the user's wishes
- **SCS CALIBRATION CERTIFICATE**
 - Free SCS certificate provided to avoid additional costs for re-calibration at the initial purchase



00730084

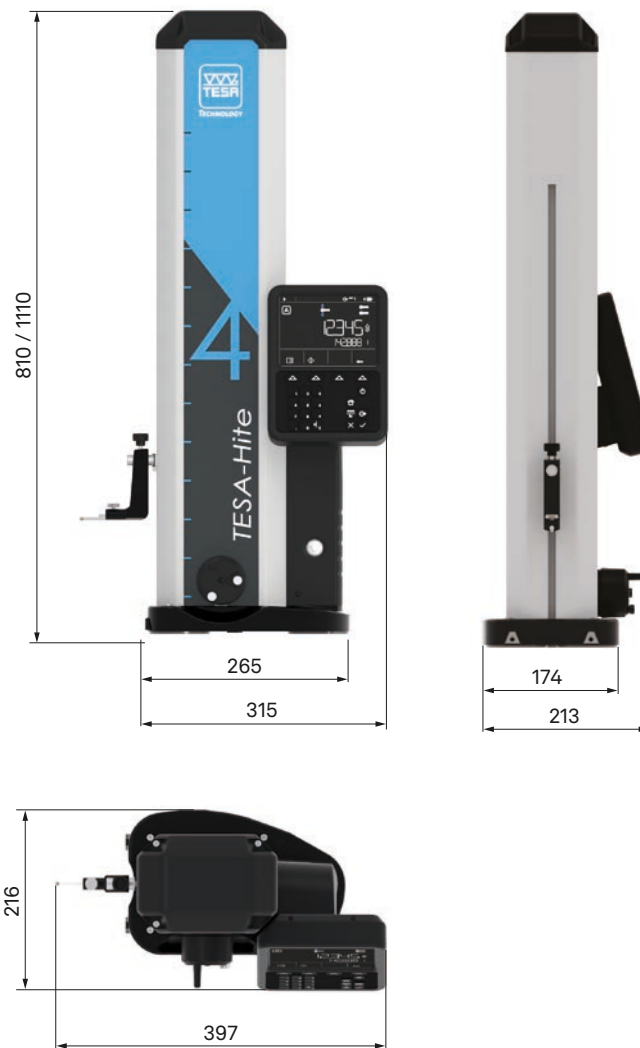
Standard	Factory standard
Resolution	0,0001 / 0,001 / 0,01 mm .00001 / .0001 / .001 in
Zero	Fixed
Coefficient of linear expansion	$(12 \pm 1,5) \times 10^{-6} \text{ K}^{-1}$
Material	Base: cast iron
Degree of protection	Panel: IP65
Particular characteristic(s)	Integrated fine adjustment Air cushion system
Panel	Panel: 155 x 210 x 43 mm Screen: colour, 121 x 92 mm Value on screen: 20 x 10 mm
Weight	Model 400: 24 kg Model 700: 30 kg
Power supply	Power connection Rechargeable interchangeable battery
Data output(s)	TLC
Function(s)	Manual displacement of the measuring probe
Execution	Manual
Autonomy	≈ 60 hours
Included in delivery	SCS calibration certificate Declaration of conformity
Measuring force	$1,5 \pm 0,5 \text{ N}$
Units	mm / in

1D height gauges

Part number	Designation	Measuring range mm	Max. perm. errors μm	Repeatability limit μm	Max. perm. perp. error μm	Measuring force N	Weight kg
00730084	TH 400	415	2,5 + 4L	On surface: ≤ 2 On arc: ≤ 3	9	1,5 \pm 0,5	24
00730085	TH 700	715	2,5 + 4L	On surface: ≤ 2 On arc: ≤ 3	13	1,5 \pm 0,5	30

Accessories

Part number	Designation
00760124	Practice piece
00760152	Dust cover, 600 mm
00760153	Dust cover, 900 mm
04981001	DATA-DIRECT software
04981002	STAT-EXPRESS software
DATA-VIEWER	Free data acquisition software
04760183	TLC-BLE Bluetooth® emitter + USB dongle receiver + 1,5 m extension cable set
04760184	TLC-BLE Bluetooth® emitter
04760185	USB receiver + 1,5 m extension cable
00760249	Cleaning liquid for granite table, 1 L
00760258	14 V charger + adapter
S07610172	Travel case for TESA-HITE
063404	TESA-HITE 400 and TESA-HITE MAGNA 400 packaging
063405	TESA-HITE 700 and TESA-HITE MAGNA 700 packaging



TESA-HITE MAGNA

- **PANEL**
 - Protected against the penetration of liquids or dust (IP65)
 - Big colour screen for better reading in dimly lit surroundings
 - Black display background for excellent contrast
 - Large numbers displayed on the screen (21 mm) for optimal readability
 - Keyboard with few buttons for easy learning without confusion
- **AUTONOMY**
 - Long battery life (60h) to avoid too frequent recharging
- **MEASURE**
 - Philosophy of use similar to tablets or smartphones
 - Quick access to the first measurement from start up (<4s) for a significant time saving
 - Magnetic measuring system (patented) ensuring functioning in the extreme conditions of the workshop
 - QUICKCENTER DYNAMIC technology integrated to efficiently determine the culmination points
 - Context-based online help to avoid incorrect use and bad results
 - The interface can be customized according to the user's wishes
- **SCS CALIBRATION CERTIFICATE**
 - Free SCS certificate provided to avoid additional costs for re-calibration at the initial purchase



00730082

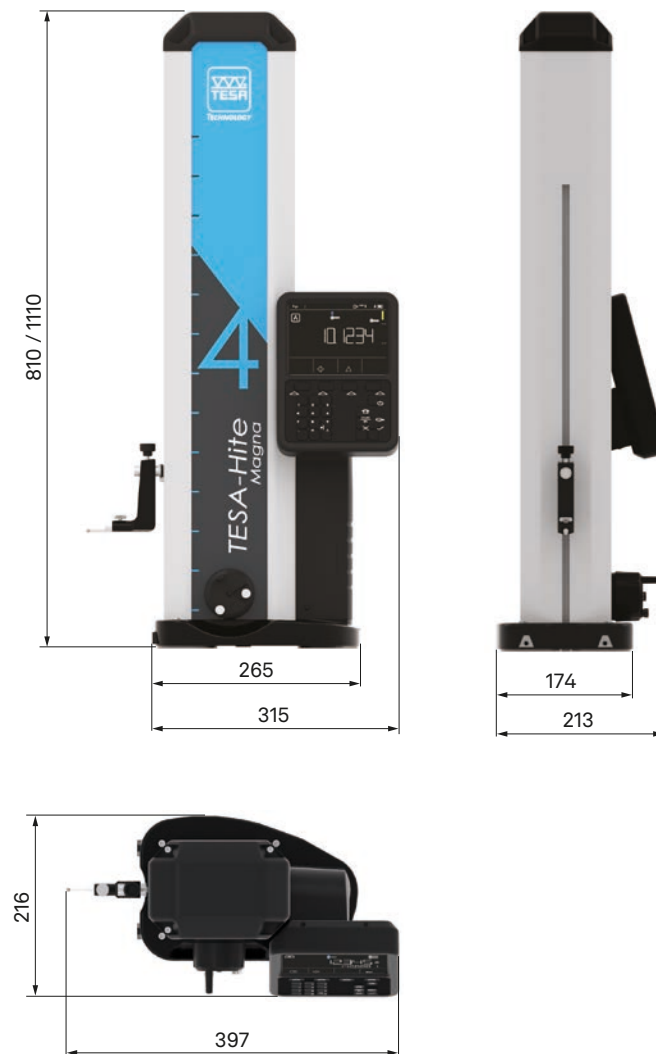
Standard	Factory standard
Resolution	0,001 / 0,005 / 0,01 mm .0001 / .0002 / .001 in
Zero	Fixed
Coefficient of linear expansion	$(12 \pm 1,5) \times 10^{-6} \text{ K}^{-1}$
Material	Base: cast iron
Degree of protection	Measuring system: IP55 Panel: IP65
Particular characteristic(s)	Integrated fine adjustment
Panel	Panel: 155 x 210 x 43 mm Screen: colour, 121 x 92 mm Value on screen: 20 x 10 mm
Weight	Model 400: 15 kg Model 700: 18 kg
Power supply	Power connection Rechargeable interchangeable battery
Data output(s)	TLC
Function(s)	Manual displacement of the measuring probe
Execution	Manual
Autonomy	≈ 60 hours
Included in delivery	SCS calibration certificate Declaration of conformity
Measuring force	1,5 ± 0,5 N
Units	mm / in

1D height gauges

Part number	Designation	Measuring range mm	Max. perm. errors μm	Repeatability limit μm	Measuring force N	Weight kg
00730082	TH MG 400	415	≤ 8	On surface: ≤ 3 On arc: ≤ 5	$1,5 \pm 0,5$	15
00730083	TH MG 700	715	≤ 8	On surface: ≤ 3 On arc: ≤ 5	$1,5 \pm 0,5$	18

Accessories

Part number	Designation
00760124	Practice piece
00760152	Dust cover, 600 mm
00760153	Dust cover, 900 mm
04981001	DATA-DIRECT software
04981002	STAT-EXPRESS software
DATA-VIEWER	Free data acquisition software
04760183	TLC-BLE Bluetooth® emitter + USB dongle receiver + 1,5 m extension cable set
04760184	TLC-BLE Bluetooth® emitter
04760185	USB receiver + 1,5 m extension cable
00760249	Cleaning liquid for granite table, 1 L
00760258	14 V charger + adapter
S07610172	Travel case for TESA-HITE
063404	TESA-HITE 400 and TESA-HITE MAGNA 400 packaging
063405	TESA-HITE 700 and TESA-HITE MAGNA 700 packaging



TESA μ -HITE

- **PANEL**
 - Hybrid with colour touch screen and keyboard
 - Refined keyboard for easy handling without confusion
- **MEASUREMENT**
 - Advanced functions (angle, parallelism, 2D, ...) for a multi-task instrument, accessible to all users
 - Context-based online help to avoid incorrect use and bad results
 - Clear interface to decrease possible errors due to bad interpretation of the displayed results
 - Flexible since the instrument can be used as 1D probe as well as height gauge
- **INSTRUMENT**
 - Turnkey solution easy to set up and quickly operational
 - Its small footprint makes it an instrument that can be integrated and moved in any kind of workshop close to production machines
- **DATA MANAGEMENT**
 - Sending values to computer via TLC port (cable or Bluetooth)
 - Automatic creation of pdf reports or txt files on USB stick
 - Data printing via USB printer
- **SCS CALIBRATION CERTIFICATE**
 - Free SCS Certificate supplied with purchase to avoid any additional extra costs for calibration of the instrument directly after purchase



00730503

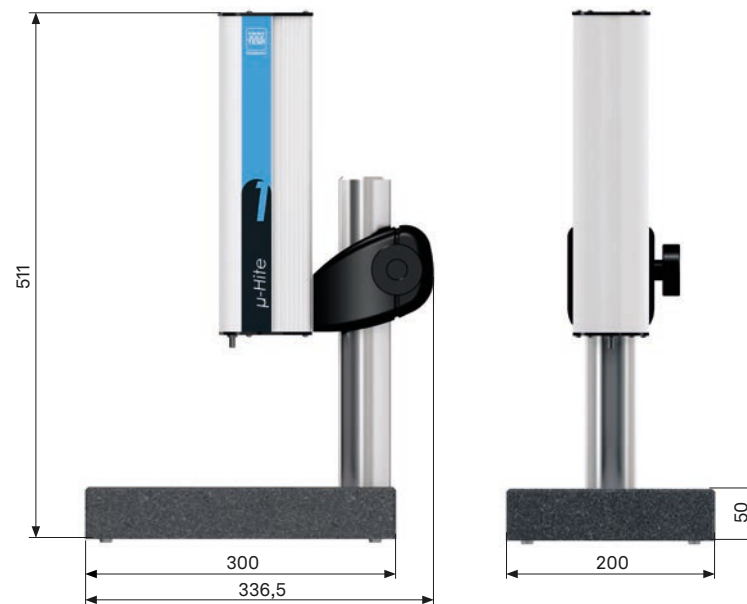
Standard	Factory standard
Resolution	0,001 mm / 0,0001 mm .0001 / .00005 in
Zero	Fixed
Coefficient of linear expansion	11,5 x 10 ⁻⁶ K ⁻¹
Material	Table: granit Pole: hardened steel Measuring head support: cast iron
Dimensions	Granite: 200 x 300 x 50 mm Pole: Ø 50 x 300 mm
Degree of protection	Measuring head: IP50
Panel	Colour & touch screen, 84 x 152 mm Keyboard: backlit
Weight	Table + pole + support: 16,2 kg Panel + box: 1,5 kg Measuring head: 2,5 kg
Data output(s)	TLC, USB
Max. displacement speed	Fast displacement: 10, 20, 30, 40 mm/s Probing: 5, 10 mm/s
Execution	Motorised
Included in delivery	SCS calibration certificate Declaration of conformity
Measuring force	1,0 ± 0,2 N 0,6 ± 0,2 N
Units	mm / in

Measuring station

Part number	Designation	Max. perm. errors μm	Repeatability limit μm	Measuring force N	Execution
00730503	μ -HITE	Axial: 1 Offset: 2	Axial: 0,5 Offset: 1	0,6 or 1	Motorised
00730502	μ -HITE without granite, pole and support	Axial: 1 Offset: 2	Axial: 0,5 Offset: 1	0,6 or 1	Motorised
00730504	Retrofit kit for former μ -HITE			0,6 or 1	

Accessories

Part number	Designation (catalog)
00760235	USB printer
00760250	Thermal paper (4 rolls)
04981001	DATA-DIRECT software
04981002	STAT-EXPRESS software
DATA-VIEWER	Free data acquisition software
04760183	TLC-BLE Bluetooth® emitter + USB dongle receiver + 1,5 m extension cable set
04760184	TLC-BLE Bluetooth® emitter
04760185	USB receiver + 1,5 m extension cable
00760258	14 V charger + adapter
00760249	Cleaning liquid for granite table, 1 L
063416	μ -HITE packaging



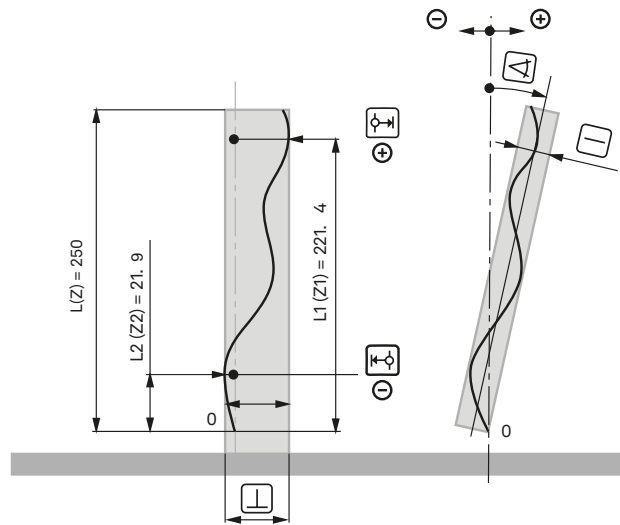
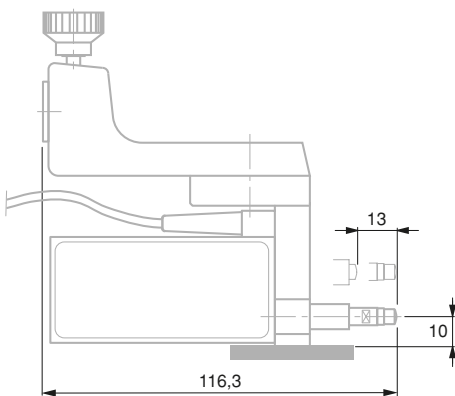
IG13 probe and accessories

The IG13 probe has been specially developed for the range of the MICRO-HITE (manual or motorised) height gauges for reliability and accuracy reasons. Robust, it is used in laboratories as well as workshops where the working environment is more restrictive.



Measuring range	13 mm
Max. perm. errors	1 μ m
Measuring force	0,45 N at zero 0,75 N at stop
Included in delivery	Measurement report Declaration of conformity

Part number	Designation	Remark(s)
00760138	IG13 holder	
00760139	IG13 probe	
00760140	IG13 probe + holder	
00760247	Connection cable to the MH or MH+M	Useable with height gauges 00730073 to 00730081



Accessories for perpendicularity measurement

Supports for accessories

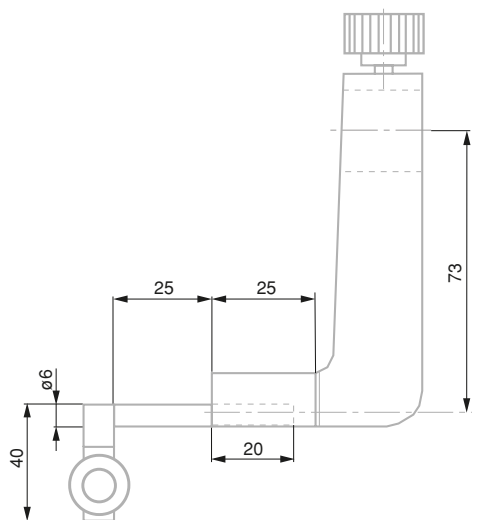
Certain height gauges of the range are adjusted in their perpendicularity (frontal plane) so that they can be used as a squareness measuring instrument by using a lever-type dial test indicator or other similar accessory. In this configuration we speak of a mechanical perpendicularity deviation only.

- Manual MICRO-HITE models
- Motorised MICRO-HITE+M models
- Manual TESA-HITE models (with external display)

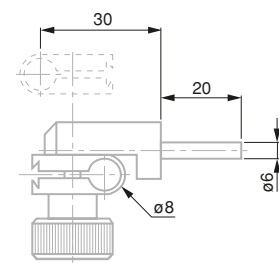
For example, a TWIN-T10 display coupled to an inductive probe and its support is an optimal configuration for detecting perpendicularity deviations. Other configurations are also possible.



Part number	Designation
00760222	Holder for accessories
00760166	Holder for accessories



00760222



00760166

Printer for MICRO-HITE range

Together with instruments in the MICRO-HITE range as well as the TESA μ -HITE measuring station, data can be automatically and directly sent to a printer connected to the control panel.

As the printer is optional, it can be connected to an instrument in this range at any time of its use.



Part number	Designation	Remark(s)
00760235	USB printer for MICRO-HITE	For panel 00760233 and 00760234

MICRO-HITE fine adjustment system



Part number	Designation	Remark(s)
00760246	MICRO-HITE fine adjustment kit	For MICRO-HITE 2016 range

Printers and accessories

Battery and accessories

The power supply of a MICRO-HITE or a MICRO-HITE + M can be achieved via two means:

- via a network connected to power
- via an integrated battery in the instrument, this battery is rechargeable and easy to remove.

With an accumulator, work on the control granite is therefore much easier to the extent that no power cable impedes the operator's movements with the height gauge.

When used mainly on battery power, it is highly advisable to purchase a second battery pack that will, through an interchangeable system, always have an operational battery when the other is charging. This allows an infinite autonomy unlike the instruments with an integrated battery without possibility of exchange.



Part number	Designation	Remark(s)
00760256	Rechargeable battery block	For MICRO-HITE 2016 range
00760258	14 V charger + adapter	For MICRO-HITE 2016 range

Cleaning liquid for granite table

- SCOPE
 - Thorough cleaning of all types of stone surfaces
 - Daily or weekly use
 - Apply with a lint free cloth and then wipe with a dry cloth.
- AUTONOMY

Cleaning is an important part of preventive maintenance. It ensures correct measurements and extends the life of your granite.



Part number	Designation
00760249	Cleaning liquid for granite table, 1 L

Dust cover

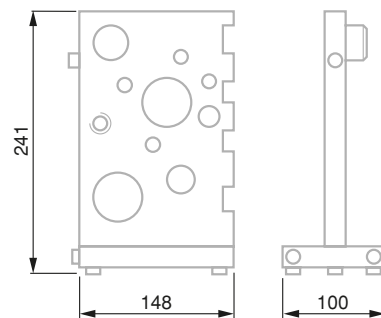
In certain situations the columns are used in harsh production environments characterized by a high rate of dust and frequent spills of liquid (water, oil, ...). Thus, a cover can be the essential accessory to effectively protect the instrument when not in use.



Part number	Designation
00760151	Dust cover, 350 mm
00760152	Dust cover, 600 mm
00760153	Dust cover, 900 mm

Practice piece

Just as learning an instrument is a key moment to confirm optimum productivity later, TESA has developed an exercise piece that allows to review all metrological options that offer its vertical measuring ranges.

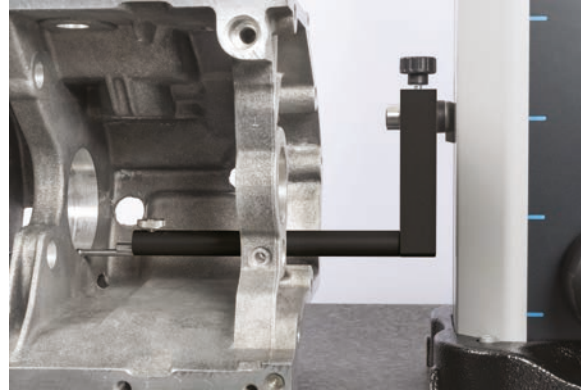


00760124

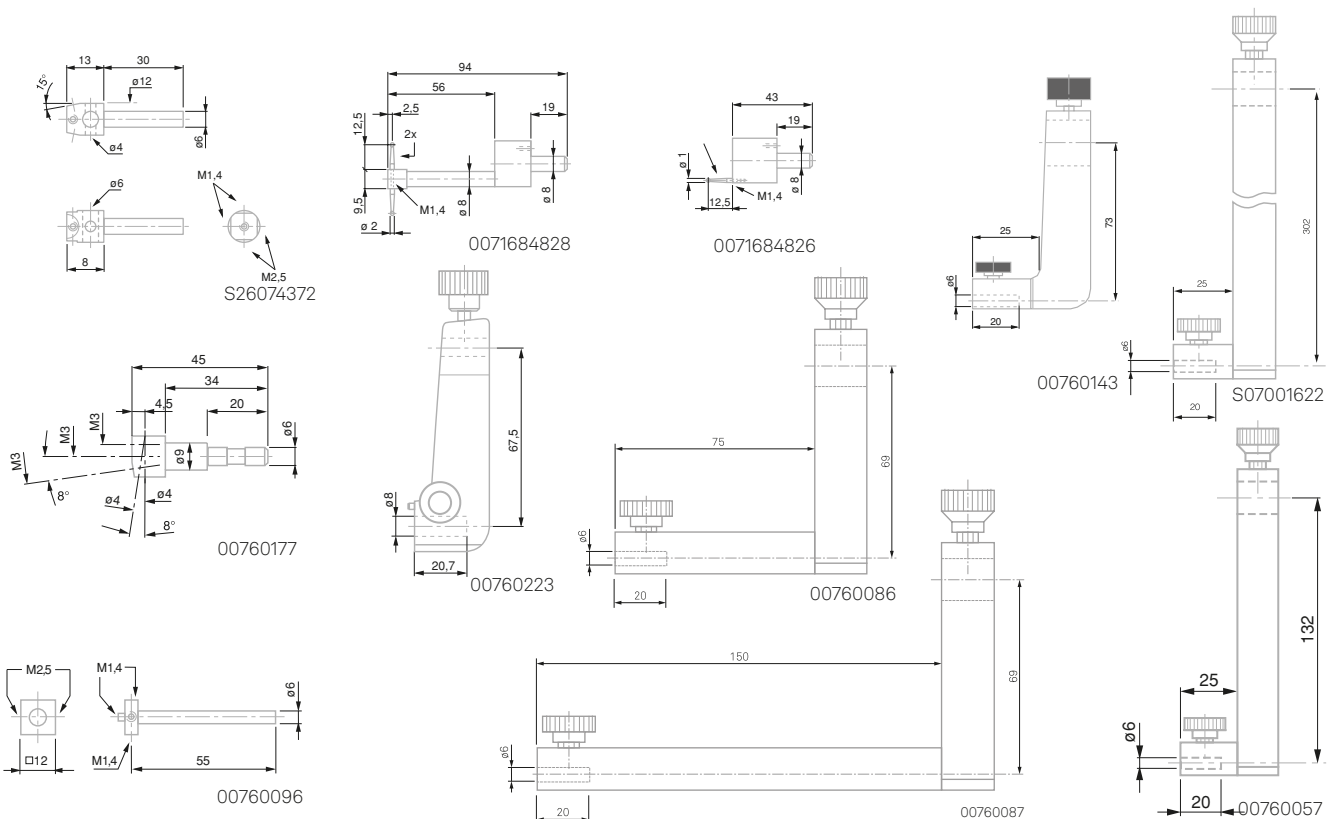
Part number	Designation
00760124	Practice piece

Other accessories for height gauges

Inserts holders for TESA-HITE and MICRO-HITE ranges



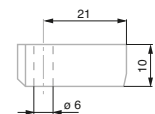
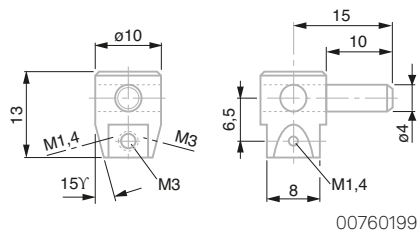
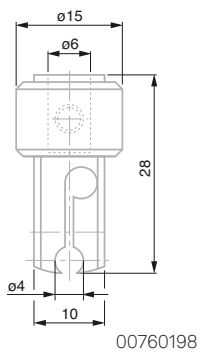
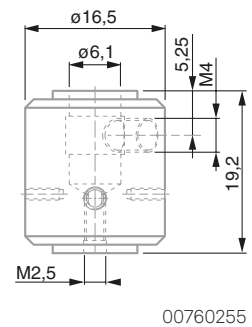
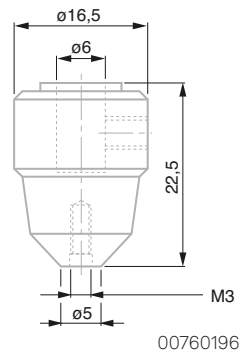
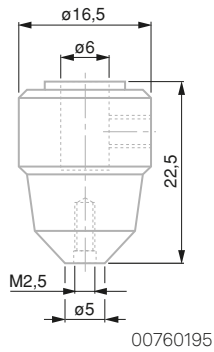
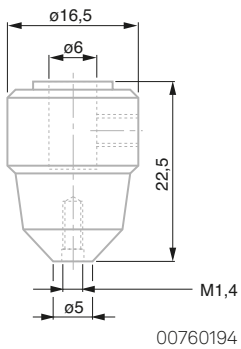
Part number	Fixing mm	Particular characteristic(s)
S26074372	Ø 6	For insert Ø 4 mm (1), Ø 6 mm (1), M1,4 (2), M2,5 (2)
00760096	Ø 6	For inserts M1,4 (3) and M2,5 (2)
00760177	Ø 6	For M3 inserts
00760243	Ø 6	For inserts with Ø 6 mm
0071684828	Ø 8	For M1,4 inserts (including Ø 2 mm and Ø 2,5 mm)
0071684826	Ø 8	For M1,4 inserts (including Ø 1 mm)
00760057	Ø 14,5	For inserts with Ø 6 mm
00760086	Ø 14,5	For inserts with Ø 6 mm
00760087	Ø 14,5	For inserts with Ø 6 mm
S07001622	Ø 14,5	For inserts with Ø 6 mm
00760223	Ø 14,5	For inserts with Ø 8 mm



Inserts holders for TESA μ -HITE range



Part number	Execution	Fixing mm	Particular characteristic(s)
00760187	Radial		
00760199	Radial	Ø 4	For inserts M1,4 (2) and M3 (2)
00760194	Axial	Ø 6	For M1,4 inserts
00760195	Axial	Ø 6	For M2,5 inserts
00760196	Axial	Ø 6	For M3 inserts
00760198	Radial	Ø 6	For M4 inserts
00760255	Radial	Ø 6	For inserts M1,4 (2) and M2,5 (3)



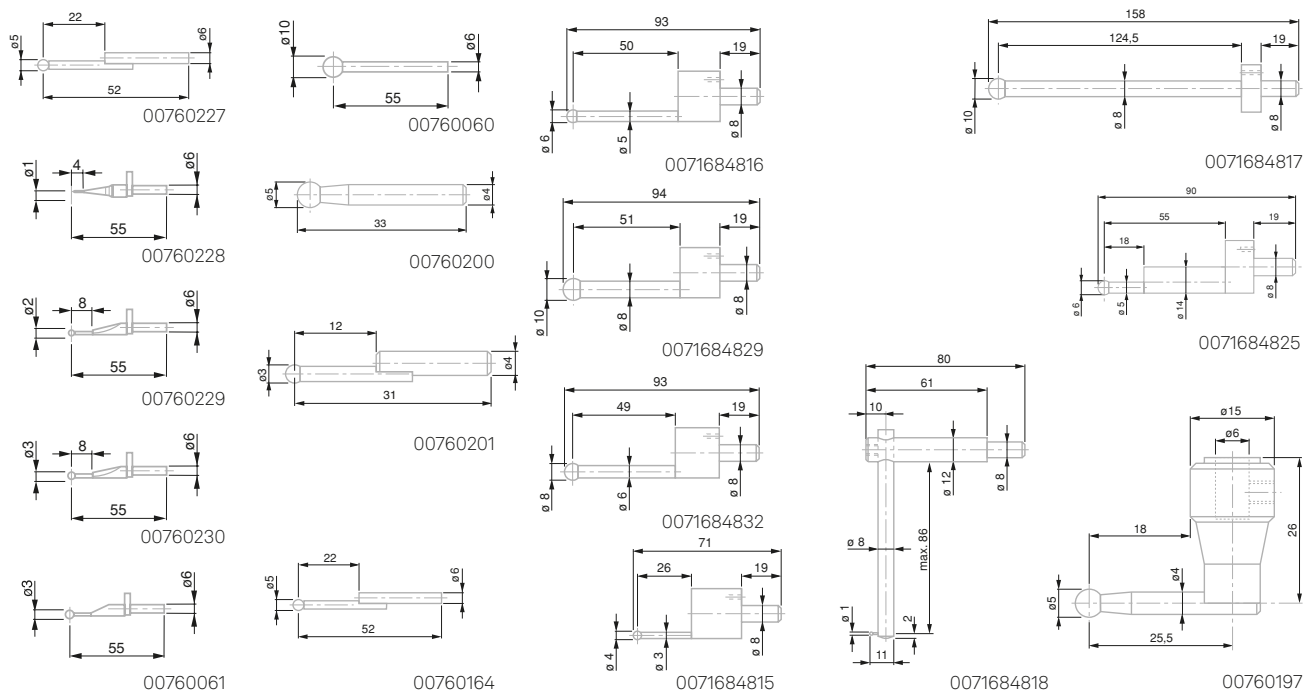
Inserts and holders

Ball tip insert, mounting $\varnothing 4$, $\varnothing 6$ & $\varnothing 8$ mm



00760227 + 00760243

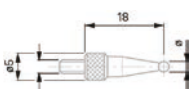
Part number	Diameter mm	Probe length mm	Fixing mm	Material
0071684818	1	80	$\varnothing 8$	Steel
0071684815	4	71	$\varnothing 8$	Tungsten carbide
0071684825	6	90	$\varnothing 8$	Tungsten carbide
0071684816	6	93	$\varnothing 8$	Tungsten carbide
0071684832	8	93	$\varnothing 8$	Tungsten carbide
0071684829	10	94	$\varnothing 8$	Tungsten carbide
0071684817	10	158	$\varnothing 8$	Tungsten carbide
00760228	1	55	$\varnothing 6$	Tungsten carbide
00760229	2	55	$\varnothing 6$	Tungsten carbide
00760230	3	55	$\varnothing 6$	Tungsten carbide
00760061	3	55	$\varnothing 6$	Tungsten carbide
00760197	5	25,5	$\varnothing 6$	Tungsten carbide
00760062	5	34,1	$\varnothing 6$	Tungsten carbide
00760227	5	52	$\varnothing 6$	Tungsten carbide
00760060	10	55	$\varnothing 6$	Tungsten carbide
00760201	3	31	$\varnothing 4$	Tungsten carbide
00760200	5	33	$\varnothing 4$	Tungsten carbide



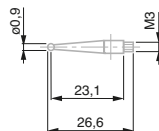
Ball tip inserts, mounting M2,5 and M3



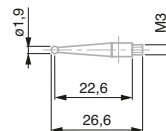
Part number	Diameter mm	Probe length mm	Fixing mm	Material	Particular characteristic(s)
00760180	0,9	26,6	M3	Steel	For TESA-HITE, MICRO-HITE and μ -HITE
00760181	1,9	26,6	M3	Steel	For TESA-HITE, MICRO-HITE and μ -HITE
00760182	2,9	26,6	M3	Steel	For TESA-HITE, MICRO-HITE and μ -HITE
03560051	1	18	M2,5	Tungsten carbide	For TESA-HITE, MICRO-HITE and μ -HITE
03560052	2	18	M2,5	Tungsten carbide	For TESA-HITE, MICRO-HITE and μ -HITE
03560053	3	18	M2,5	Tungsten carbide	For TESA-HITE, MICRO-HITE and μ -HITE
03560054	4	18	M2,5	Tungsten carbide	For TESA-HITE, MICRO-HITE and μ -HITE
03560055	5	18	M2,5	Tungsten carbide	For TESA-HITE, MICRO-HITE and μ -HITE
03560056	6	18	M2,5	Tungsten carbide	For TESA-HITE, MICRO-HITE and μ -HITE
03560057	7	18	M2,5	Tungsten carbide	For TESA-HITE, MICRO-HITE and μ -HITE
03560058	8	18	M2,5	Tungsten carbide	For TESA-HITE, MICRO-HITE and μ -HITE



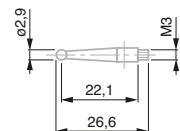
03560051-52-53-54-55-56-57-58



00760180



00760181



00760182

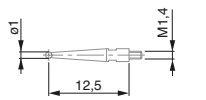
Inserts and holders

Ball tip inserts, mounting M1,4

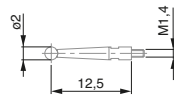


01860201 + 00760096

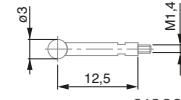
Part number	Diameter mm	Probe length mm	Fixing mm	Material	Particular characteristic(s)
01860201	1	12,53	M1,4	Tungsten carbide	For TESA-HITE, MICRO-HITE and μ -HITE
01860202	2	12,53	M1,4	Tungsten carbide	For TESA-HITE, MICRO-HITE and μ -HITE
01860203	3	12,53	M1,4	Tungsten carbide	For TESA-HITE, MICRO-HITE and μ -HITE
01860211	1	36,5	M1,4	Tungsten carbide	For TESA-HITE, MICRO-HITE and μ -HITE
01860212	2	36,5	M1,4	Tungsten carbide	For TESA-HITE, MICRO-HITE and μ -HITE
01860213	3	36,5	M1,4	Tungsten carbide	For TESA-HITE, MICRO-HITE and μ -HITE



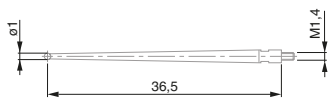
01860201



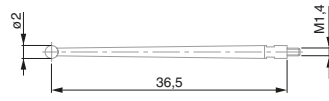
01860202



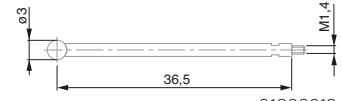
01860203



01860211



01860212

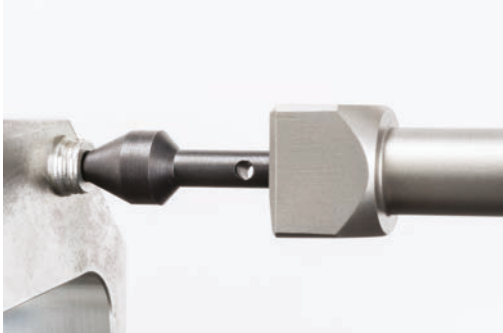


01860213

Cone probes

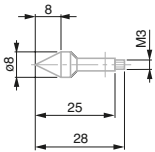
Conical probes are in principle not used for conventional measure such as «probing», since it is not possible by their geometry to trigger in an accurate way a measuring point.

They are mainly used for determining the location of bores as their shape allows quick mechanical positioning at the center of these elements.

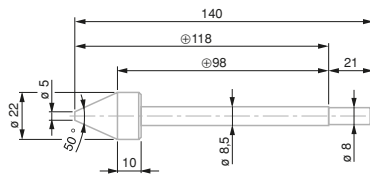


0071684822

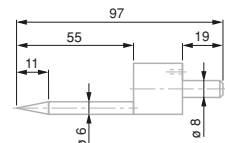
Part number	Diameter mm	Probe length mm	Fixing mm	Material
0071684819	22	140	Ø 8	Steel
0071684822	6	97	Ø 8	Steel
00760183	8	28	M3	Steel



00760183



0071684819



0071684822

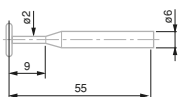
Disc inserts

As their name suggests, these styli are disc shaped with variable thicknesses and diameters to allow for probing of centring shoulders and grooves.

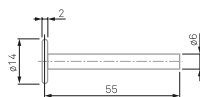
These accessories are often used in interior bore measurements where they are a good substitute to the star shaped stylus if this one cannot be used.



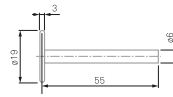
Part number	Diameter mm	Probe length mm	Fixing mm	Material
0071684827	12	91	Ø 8	Tungsten carbide
00760074	4,5	55,5	Ø 6	Tungsten carbide
00760075	14	56	Ø 6	Tungsten carbide
00760076	19	56,5	Ø 6	Tungsten carbide



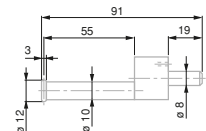
00760074



00760075



00760076



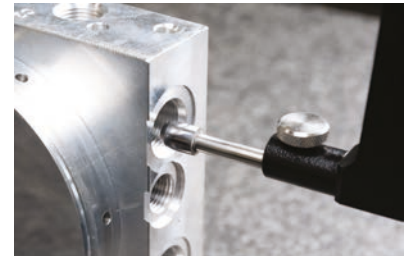
0071684827

Inserts and holders

Cylindrical or barrel inserts

The cylinder-shaped stylus are often used for the measurement of elements that cannot or only with difficulty be measured with a simple ball stylus. Indeed, it happens that for some measures the contact between the accessory and the part to be measured cannot be guaranteed when the end of the accessory is a sphere.

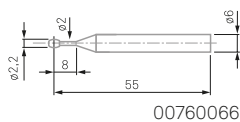
It can also be used for measuring threaded elements and often for the determination of center tapped holes



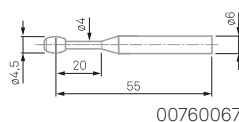
0071684820

00760068

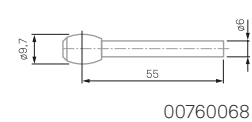
Part number	Diameter mm	Probe length mm	Fixing mm	Material	Particular characteristic(s)
03510502	3,3	6	M2,5	Tungsten carbide	Counter-nut for radial alignment
03510503	4	6	M2	Tungsten carbide	Counter-nut for radial alignment
0071684820	10	96	Ø 8	Steel	
00760066	2,2	57,5	Ø 6	Tungsten carbide	
00760067	4,5	60	Ø 6	Tungsten carbide	
00760068	9,7	62,5	Ø 6	Tungsten carbide	
00760082	2	58,5	Ø 6	Tungsten carbide	
00760093	10	91		Steel basis, measuring face tungsten carbide	



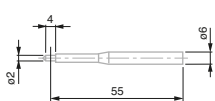
00760066



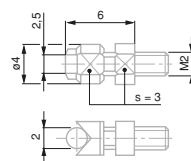
00760067



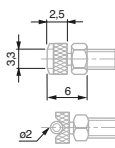
00760068



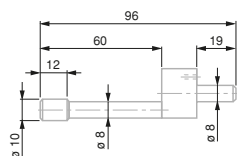
00760082



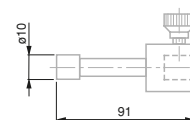
03510503



03510502



0071684820

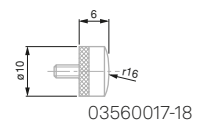
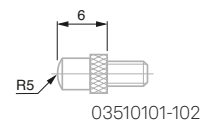
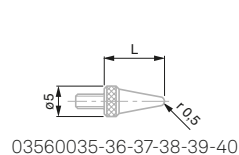
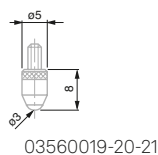
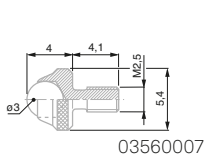
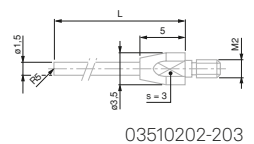
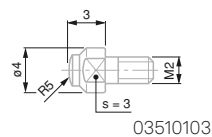
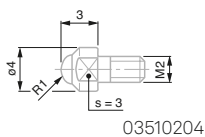
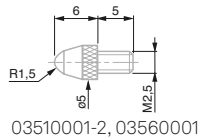
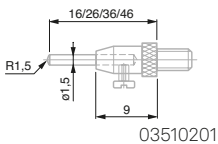


00760093

Hemispherical inserts



Part number	Radius	Probe length	Fixing	Material	Particular characteristic(s)
	mm	mm	mm		
03510201	1,5	16, 26, 36, 46	M2,5	Steel	Interchangeable pins
03510202	5	16	M2	Tungsten carbide	
03510203	5	26	M2	Tungsten carbide	
03510204	1	3	M2	Tungsten carbide	
03510001	1,5	6	M2,5	Steel	
03510002	1,5	6	M2,5	Tungsten carbide	
03510101	5	6	M2,5	Steel	
03510102	5	6	M2,5	Tungsten carbide	
03510103	1	3	M2	Tungsten carbide	
03560001	1,5	6	M2,5	Sapphire	
03560007	1,5	4	M2,5	Tungsten carbide	
03560017	16	6	M2,5	Steel	
03560018	16	6	M2,5	Tungsten carbide	
03560019	1,5	8	M2,5	Steel	
03560020	1,5	8	M2,5	Tungsten carbide	
03560021	1,5	8	M2,5	Ruby	
03560035	0,5	5	M2,5	Steel	
03560036	0,5	10	M2,5	Steel	
03560037	0,5	15	M2,5	Steel	
03560038	0,5	20	M2,5	Steel	
03560039	0,5	30	M2,5	Steel	
03560040	0,5	40	M2,5	Steel	

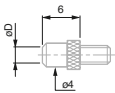


Inserts and holders

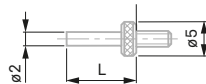
Inserts with flat measuring face



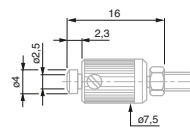
Part number	Diameter mm	Probe length mm	Fixing mm	Material	Particular characteristic(s)
03510902	4	16	M2,5	Tungsten carbide	Adjustable parallelism
03560008	1,5	20	M2,5	Steel	Interchangeable pins
03560009	1,5	20	M2,5	Tungsten carbide	Interchangeable pins
03510801	2,5	6	M2,5	Steel	
03510802	2,5	6	M2,5	Tungsten carbide	
03560022	3,4	6	M2,5	Steel	
03560023	3,4	6	M2,5	Tungsten carbide	
03560026	2	2,8	M2,5	Steel	
03560027	2	7,8	M2,5	Steel	
03560028	2	12,8	M2,5	Steel	
03560029	2	17,8	M2,5	Steel	
03560012	5	5	M2,5	Steel	
03560013	5	5	M2,5	Tungsten carbide	
03560014	10	6	M2,5	Steel	
03560015	10	6	M2,5	Tungsten carbide	
03560016	20	3,6	M2,5	Steel	



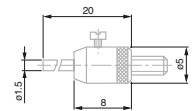
03510801, 03560026, 03510902



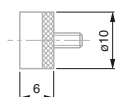
03560026-27-28-29



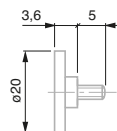
03510902



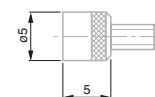
03560008-9



03560014-15



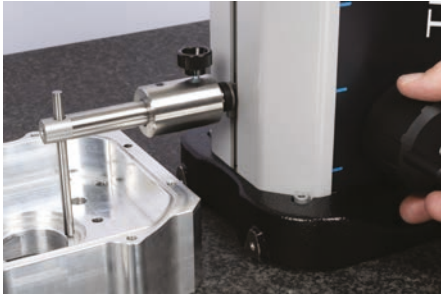
03560016



03560012-13

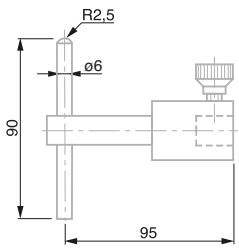
Shaft probes

The shaft probes are mainly used to measure grooves, centring shoulders, blind bores, ...

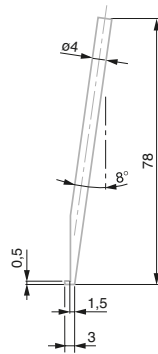


00760178

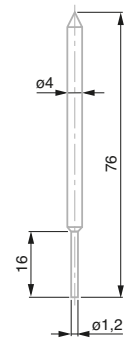
Part number	Probe length mm	Material	Particular characteristic(s)
00760094	95	Steel	1 x flat face and 1 x hemispherical face
00760178	78	Steel	Angle 8°
00760179	76	Steel	1 x contact point face and 1 x flat face



00760094



00760178



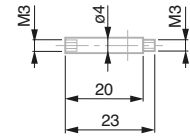
00760179

Inserts and holders

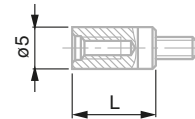
Extensions



00760184

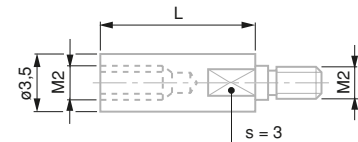


00760184



03560042-43-44-45-46-47-48-49-50

Part number	Probe length mm	Fixing mm
00760184	20	M3
03540505	10	M2
03540506	15	M2
03560042	10	M2,5
03560043	15	M2,5
03560044	20	M2,5
03560045	25	M2,5
03560046	30	M2,5
03560047	35	M2,5
03560048	40	M2,5
03560049	45	M2,5
03560050	50	M2,5

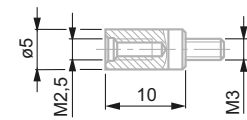


03540505-506

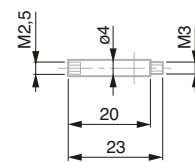
Adapters



03560065



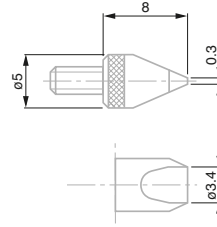
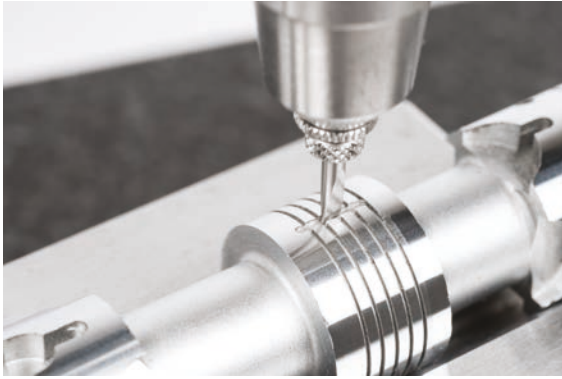
03560065



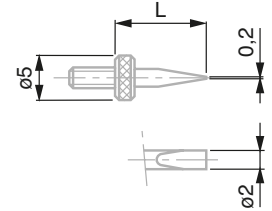
00760185

Part number	Probe length mm	Fixing mm	Particular characteristic(s)
03560092		M2,5	For M2 inserts
03560065		M3	For M2,5 inserts
00760185	20	M3	For M2,5 inserts

Inserts with knife blade shape



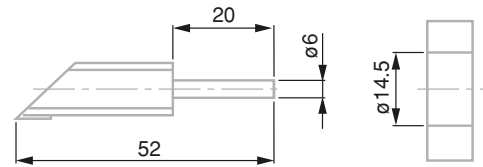
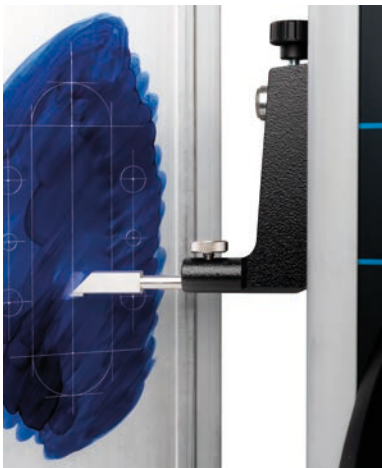
03560031



03560024

Part number	Probe length mm	Fixing mm	Material	Particular characteristic(s)
03560024	8	M2,5	Steel	Lock nut for radial alignment
03560025	8	M2,5	Tungsten carbide	Lock nut for radial alignment
03560031	5	M2,5	Steel	Lock nut for radial alignment
03560032	10	M2,5	Steel	Lock nut for radial alignment
03560033	15	M2,5	Steel	Lock nut for radial alignment
03560034	20	M2,5	Steel	Lock nut for radial alignment

Scribers



00760165

Part number	Probe length mm	Fixing mm	Material
00760172	30	Ø 6	Tungsten carbide
00760165	32	Ø 6	Tungsten carbide

Set of probe inserts + accessories

Instrument sets



00760175

Family	Part number	Description	For TESA-HITE and MICRO-HITE			For μ -HITE	
			00760232	00760173	00760148	00760175	00760186
Probe holders	00760057	Probe support \varnothing 6 mm			•		
	00760086	Probe holder \varnothing 6 mm For depth up to 110 mm			•		
	00760087	Probe holder \varnothing 6 mm For depth up to 185 mm			•		
	00760177	Adapter for M3 inserts				•	
	00760187	Probe holder for offset measurement					•
Probes	00760061	Ball tip insert \varnothing 3 mm Mounting \varnothing 6 mm	•	•	•		
	00760060	Ball tip insert \varnothing 10 mm Mounting \varnothing 6 mm		•	•		
	00760180	Ball tip insert \varnothing 0,9 mm Mounting M3				•	•
	00760181	Ball tip insert \varnothing 1,9 mm Mounting M3				•	•
	00760182	Ball tip insert \varnothing 2,9 mm Mounting M3				•	•
	00760228	Ball tip insert \varnothing 1 mm Mounting \varnothing 6 mm		•	•		
	00760229	Ball tip insert \varnothing 2 mm Mounting \varnothing 6 mm		•	•		
	00760230	Ball tip insert \varnothing 3 mm Mounting \varnothing 6 mm		•	•		
	00760066	Barrel shaped insert \varnothing 2,2 mm Mounting \varnothing 6 mm			•		
	00760067	Barrel shaped insert \varnothing 4,5 mm Mounting \varnothing 6 mm			•		
	00760068	Barrel shaped insert \varnothing 9,7 mm Mounting \varnothing 6 mm			•		
	00760074	Disc-shaped insert \varnothing 4,5 mm Mounting \varnothing 6 mm			•		
	00760075	Disc-shaped insert \varnothing 14 mm Mounting \varnothing 6 mm	•	•	•		
	00760076	Disc-shaped insert \varnothing 19 mm Mounting \varnothing 6 mm			•		
	00760082	Cylindrical insert \varnothing 2 mm Mounting \varnothing 6 mm	•		•		
	00760093	Cylindrical insert \varnothing 10 mm		•	•		
	00760183	Cone-shaped insert \varnothing 8 mm Mounting M3				•	•
	Shaft probes	00760094	Probe holder + rod	•	•	•	
00760178		Shaft probe \varnothing 4 mm Angle 8°				•	•
00760179		Cylindrical shaft probe \varnothing 4 mm 1x pointed tip				•	•
Extensions	00760184	Extension L20 mm Mounting M3 For M3 insert				•	•
	00760185	Extension L20 mm Mounting M3 For M2,5 insert				•	•