



INSTRUMENTS

MEASURING



PRECISION

SYSTEMS



STANDARD GAGE is a new product line from HEXAGON METROLOGY, the leading supplier in the field of metrology world wide.

The STANDARD GAGE line is positioned between the low-cost gauges, which offer an uncertain quality, and the Premium precision instruments, thus offering an excellent Price/Performance ratio.

STANDARD GAGE has endorsed the maxim «Effective and affordable, each precision tool can be used with every confidence for efficient quality control».

Among others, the STANDARD GAGE line offers traditional gauges such as calipers, micrometers, dial gauges, indicators, height and scribing gauges, gauge blocks. The range is constantly evolving, and currently includes a STANDARD GAGE machine VISUAL 250 for non-contact measurement.

STANDARD GAGE products are mainly manufactured in Asia, and further selected according to strict quality criteria from HEXAGON METROLOGY. **All are checked individually by means of certified master gauges for their traceability. They are also supplied with an inspection report attesting their conformity to technical specifications.**

All relevant information about STANDARD GAGE is available on **www.standardgage.com**

For more information, please contact your local distributor or send an e-mail to **standardgage@hexagonmetrology.com**.

Standard Gage is a registered trademark of Hexagon Metrology.

QUALITY CONTROL

All STANDARD GAGE products are checked to the high quality standards offered by HEXAGON METROLOGY.

Following a rigorous procedure in the laboratory to ensure their quality level, each product comes with an inspection report (see below).

STANDARD GAGE		STANDARD GAGE	
Rapport de mesure No :			
Prüfbericht Nr. :		4Q 102 01	
Inspection report No. :			
Objet : Gegenstand : 58mm dial gauge 0.001mm 0,2mm/rev Test piece :			
Marque :	Standard Gage		
Marke :			
Brand :			
Type :	01414020		
Typ :			
Type :			
No de série :	102		
Serien Nr. :			
Serial No. :			
Contrôleur : Prüfer : L. Nic Inspector :			
Timbre : Stempe : Stamp : LAB 01			
		Résultats de mesure Messergebnisse Measurement results	
		Indication error ——— ingoing plunger - - - - - outgoing plunger	
		[µm]	
		[mm]	
		Span of error (fe) 6 µm Total of error (fges) 7 µm Hysteresis (fu) 2,5 µm Repetability (fw) 0,5 µm	
HEXAGON METROLOGY		HEXAGON METROLOGY	

STANDARD GAGE		STANDARD GAGE	
Rapport de mesure			
Prüfbericht			
Inspection Report			
HEXAGON METROLOGY			



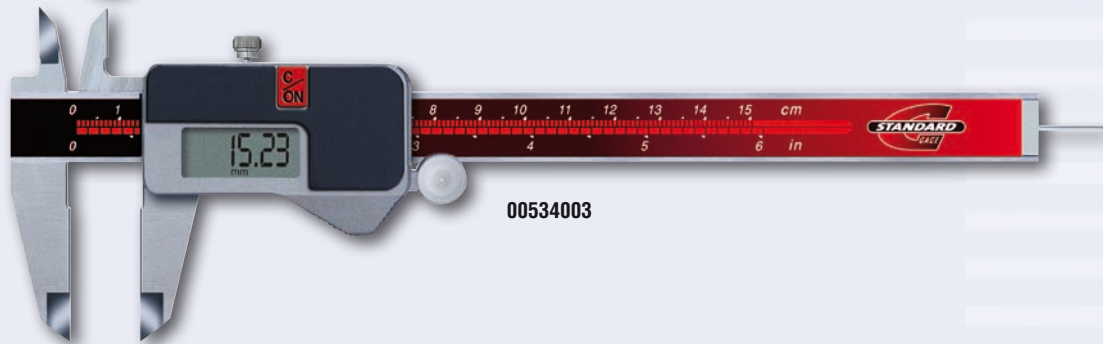
ELECTRONIC CALIPERS



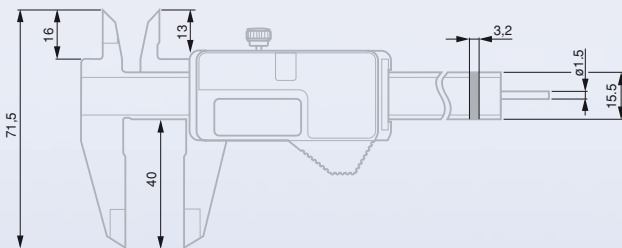
00534020



00534002



00534003



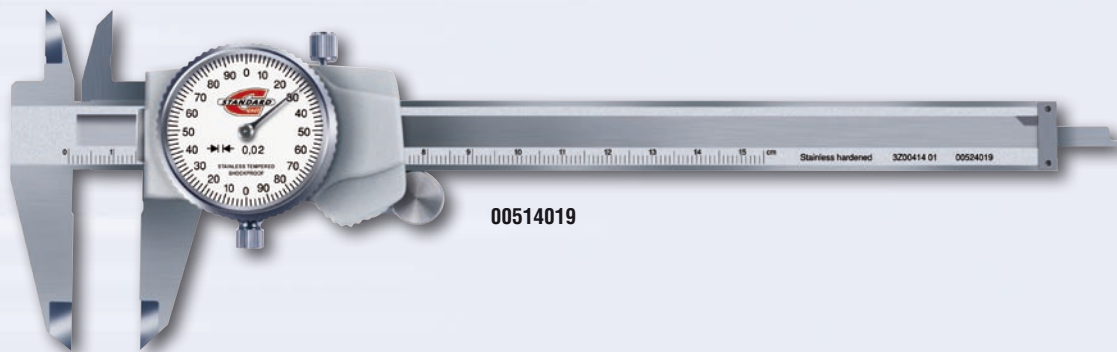
- Stainless steel beam and slider.
- With or without thumb roller.
- Direct metric/inch conversion.
- Precision to 0,02 mm (models 150 mm) or 0,04 mm (models 200 and 300 mm).
- Resolution 0,01 mm/0.0005 in.
- Large LC display.
- Supplied in a suited case with inspection report.

Order number	Measuring range		Measuring jaws L in mm	Thumb roller
	mm	in		
00534020	0 ÷ 150	0 ÷ 6	40	✓
00534021	0 ÷ 200	0 ÷ 8	50	✓
00534022	0 ÷ 300	0 ÷ 12	60	✓
TOP LINE models				
00534002	0 ÷ 150	0 ÷ 6	40	–
00534003	0 ÷ 150	0 ÷ 6	40	✓
00534004	0 ÷ 200	0 ÷ 8	50	✓
00534005	0 ÷ 300	0 ÷ 12	60	✓

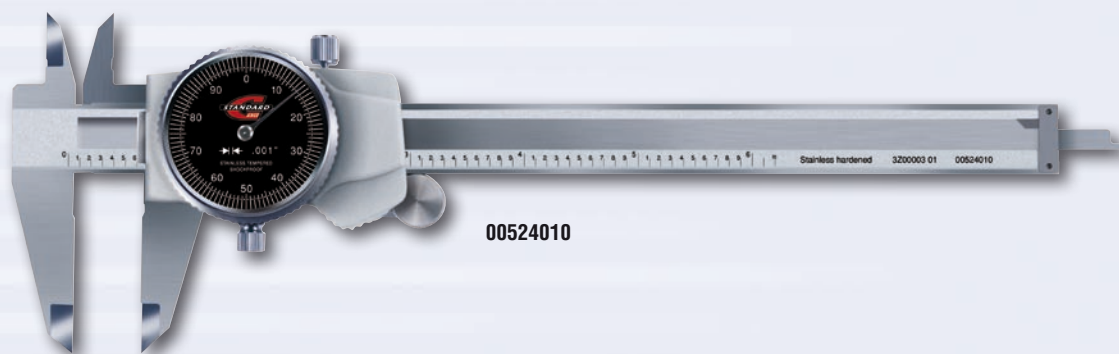
DIAL CALIPERS



00514018

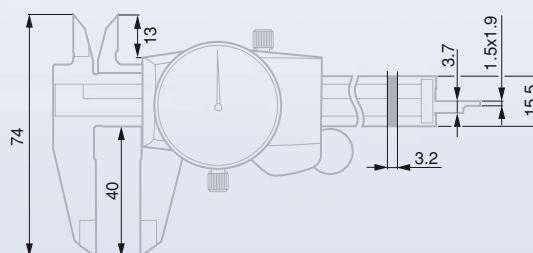


00514019



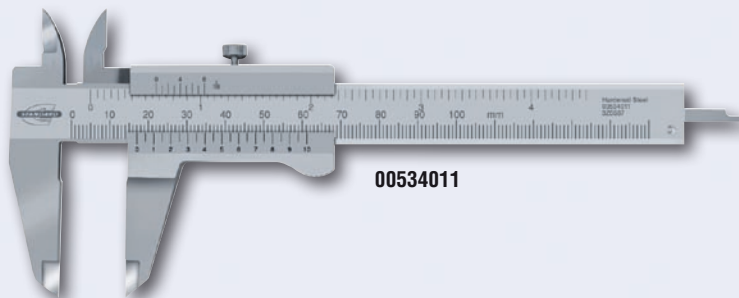
00524010

- Shockproof design.
- Made to measure internal, external and depth dimensions besides shoulders.
- Robust construction in stainless steel.
- Silky smooth sliding within the entire range.
- Supplied in a suited case with inspection report.



Order number	Measuring range	Reading range	Travel per revolution	Length of jaws	Thumb roller	Dial face
Metric models						
00514018	0 ÷ 150	0,01	1	40	–	white
00514019	0 ÷ 150	0,02	2	40	–	white
00514020	0 ÷ 200	0,02	2	50	✓	white
00514021	0 ÷ 300	0,02	2	60	✓	white
Inch models						
00524010	0 ÷ 6	0.001	0.100	1.6	✓	black
00524011	0 ÷ 6	0.001	0.100	1.6	✓	white
00524012	0 ÷ 8	0.001	0.100	2	✓	white
00524013	0 ÷ 12	0.001	0.100	2.4	✓	white

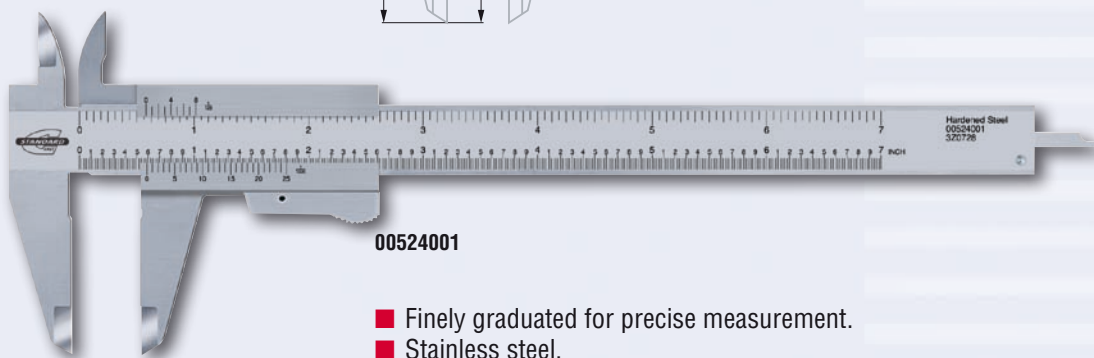
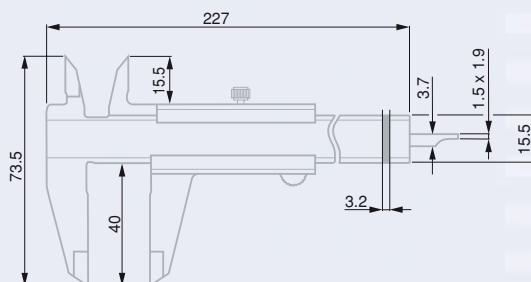
VERNIER CALIPERS



00534011



00534012

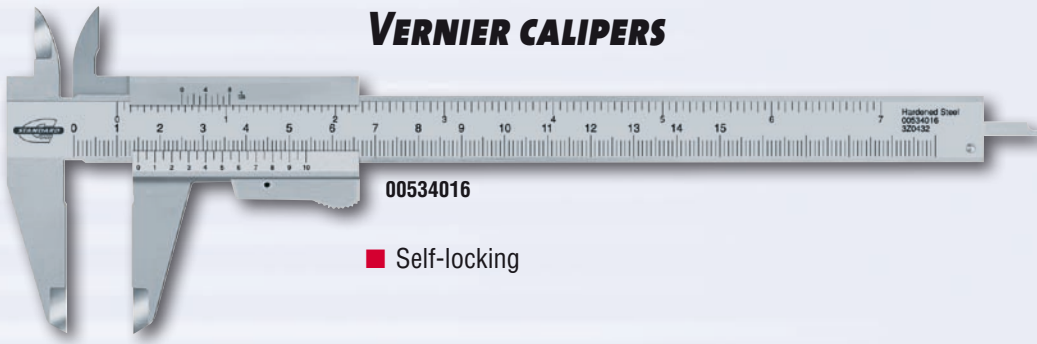


00524001

- Finely graduated for precise measurement.
- Stainless steel.
- Satin-chrome scale and vernier backgrounds.
- Supplied in a suited case with inspection report.

Order number	Measuring range		Vernier reading		Length of jaws
	lower scale	upper scale	lower scale	upper scale	
Metric models					
	mm		mm		mm
00514010	0 ÷ 150		0,02		40
00514011	0 ÷ 150		0,05		40
00514012	0 ÷ 200		0,02		50
00514013	0 ÷ 200		0,05		50
00514014	0 ÷ 300		0,02		60
00514015	0 ÷ 300		0,05		60
Metric/inch models					
	mm	in	mm	in	mm
00534011	0 ÷ 100	0 ÷ 4	0,05	1/128	30
00534012	0 ÷ 150	0 ÷ 6	0,02	0.001	40
00534013	0 ÷ 150	0 ÷ 6	0,05	1/128	40
00534014	0 ÷ 200	0 ÷ 8	0,02	0.001	50
00534015	0 ÷ 300	0 ÷ 12	0,02	0.001	60
Inch models					
	in	in	in	in	in
00524001	0 ÷ 6	0 ÷ 6	0.001	1/128	1.6
00524002	0 ÷ 8	0 ÷ 8	0.001	1/128	1.6

VERNIER CALIPERS



■ Self-locking

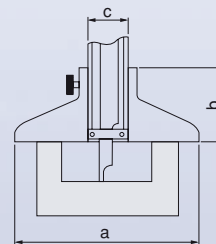
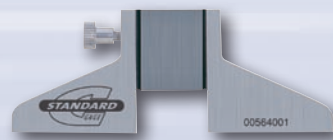
Order number	Measuring range		Vernier reading		Length of jaws
	lower	upper vernier	lower	upper vernier	
	mm	in	mm	in	
00514016	0 ÷ 150		0,02		40
00514017	0 ÷ 150		0,05		40
00534016	0 ÷ 150	0 ÷ 6	0,05	1/128	40



■ Self-locking
■ Parallax-free

Order number	Measuring range		Vernier reading		Length of jaws
	lower	upper vernier	lower	upper vernier	
	mm	in	mm	in	
00534017	0 ÷ 150	0 ÷ 6	0,02	0.001	40
00534018	0 ÷ 150	0 ÷ 6	0,05	1/128	40

DEPTH FOOT FOR CALIPERS 150 MM



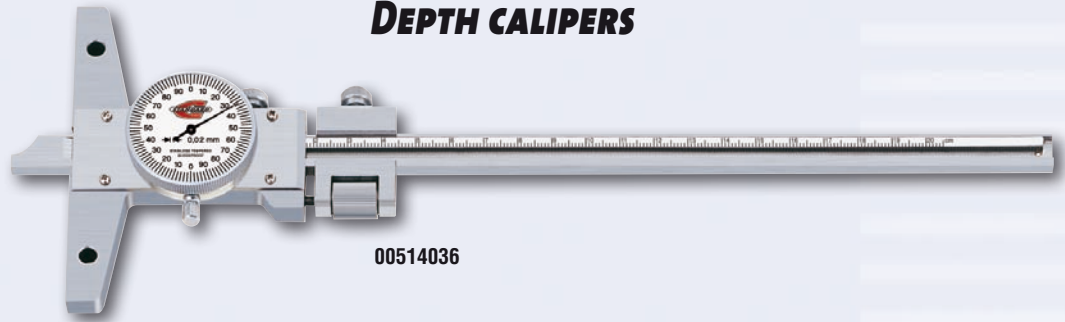
Order number	a (mm)	b (mm)	c (mm)
00564001	76,2	30	16,2



DEPTH CALIPERS

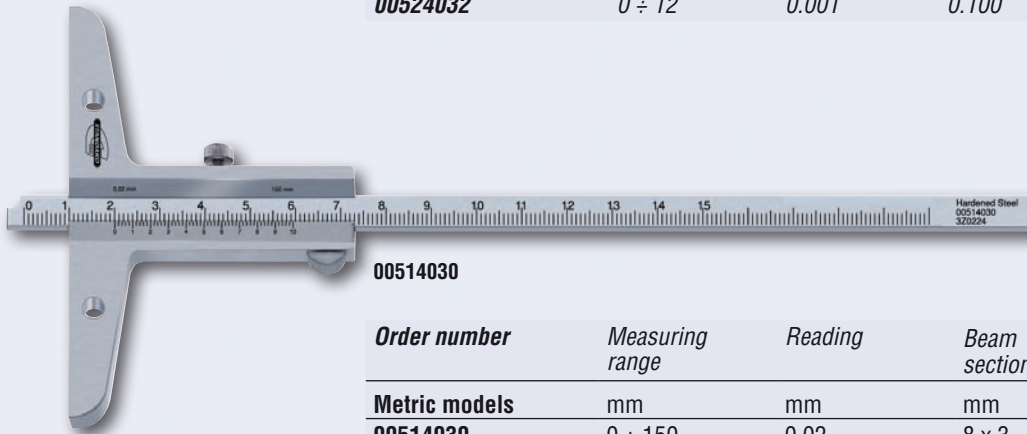
Depth calipers with dial

- Solid stainless steel construction.
- Silky smooth sliding within the entire range.
- Supplied in a suited case with inspection report.



00514036

Order number	Measuring range	Reading	Travel per revolution	Bridge length	Dial face
Metric models					
00514036	0 ÷ 150	0,02	2	100	white
00514037	0 ÷ 200	0,02	2	100	white
00514038	0 ÷ 300	0,02	2	100	white
Inch models					
00524030	0 ÷ 6	0.001	0.100	4	white
00524031	0 ÷ 8	0.001	0.100	4	white
00524032	0 ÷ 12	0.001	0.100	4	white

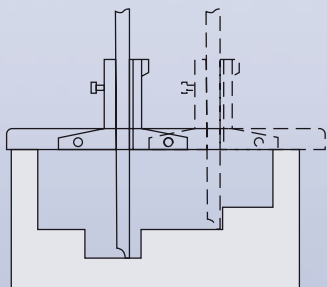


00514030

Order number	Measuring range	Reading	Beam section	Bridge length
Metric models				
00514030	0 ÷ 150	0,02	8 x 3	100
00514031	0 ÷ 150	0,05	8 x 3	100
00514032	0 ÷ 250	0,02	12 x 4	125
00514033	0 ÷ 250	0,05	12 x 4	125
00514034	0 ÷ 500	0,02	12 x 4	150
00514035	0 ÷ 500	0,05	12 x 4	150
Inch models				
00524020	0 ÷ 6	0.001	0.32 x 0.12	4
00524021	0 ÷ 10	0.001	0.48 x 0.16	5
00524022	0 ÷ 20	0.001	0.48 x 0.16	6

Depth calipers with vernier

- Finely graduated for precise measurement.
- Stainless steel.
- Satin-chrome scale and vernier backgrounds.
- Supplied in a suited case with inspection report.



REMOVABLE BRIDGES FOR DEPTH CALIPERS

- Stainless steel.
- Available for all models.

00564002

Order number	Description
00564002	Optional bridge, 180 mm
00564003	Optional bridge, 260 mm
00564004	Optional bridge, 320 mm



ELECTRONIC MICROMETERS IP54, EXTERNAL



00134041

00134001

Order number	Measuring range	Resolution		Precision	Setting standards
		Numerical indication	Micrometer head		
Metric models	mm	mm	mm	mm	mm
00134001	0 ÷ 25	0,001	0,01	0,004	
00134002	25 ÷ 50	0,001	0,01	0,004	25
00134003	50 ÷ 75	0,001	0,01	0,005	50
00134004	75 ÷ 100	0,001	0,01	0,005	75
Inch models	in	in	in	in	in
00134021	0 ÷ 1	0.00005	0.0001	0.00016	
00134022	1 ÷ 2	0.00005	0.0001	0.00016	1
00134023	2 ÷ 3	0.00005	0.0001	0.00020	2
00134024	3 ÷ 4	0.00005	0.0001	0.00020	3

Main features

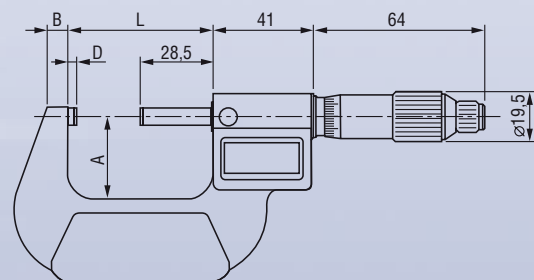
- Automatic shut-on/off.
- Metric/inch conversion.
- Zero setting / Origin.
- SR44 battery type.
- Setting standard for sizes over 25 mm/1 in.
- Ratchet friction thimble and locking nut.
- Delivered in a suited case with inspection report.
- Protection level to IP54.
- Absolute measurement.
- Carbide-tipped measuring faces.
- Resolution to 0,001 mm / 0.00005 in.
- Micrometer head resolution to 0,01 mm/0.0001 in.

Electronic micrometer sets IP54, external

Order number	Application range	Single micrometers	Setting standards
Metric models	mm		mm
00134040	0 ÷ 75	3	25, 50
00134041	0 ÷ 100	4	25, 50, 75
Inch models	in		in
00134045	0 ÷ 3	3	1, 2
00134046	0 ÷ 4	4	1, 2, 3

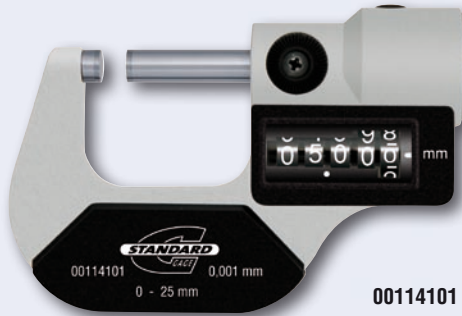
Full sets are supplied in a suited case with inspection report for each micrometer.

Measuring range		Dimensions (mm)			
Metric (mm)	Inch (in)	A	B	D	L
0 ÷ 25	0 ÷ 1	24	6	3,0	32
25 ÷ 50	1 ÷ 2	32	8	3,0	57
50 ÷ 75	2 ÷ 3	45	8	3,0	82
75 ÷ 100	3 ÷ 4	57	10	3,0	107





EXTERNAL MICROMETERS WITH DIGIT COUNTER



00114101



00114111

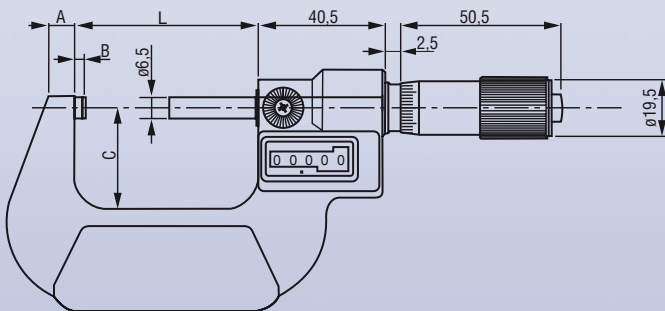
- High-resolution analogue counter for error-free readout.
- Carbide-tipped measuring faces.
- Counter resolution to 0,001 mm/0.0001 in.
- Micrometer head resolution to 0,01 mm/0.0001 in.
- Setting standard for sizes over 25 mm/1 in.
- Ratchet friction thimble and locking nut.
- Delivered in a suited case with inspection report.

Order number	Measuring range	Resolution		Precision	Setting standards
		Counter	Micrometer head		
Metric models					
00114101	0 ÷ 25	0,001	0,01	0,004	
00114102	25 ÷ 50	0,001	0,01	0,004	25
00114103	50 ÷ 75	0,001	0,01	0,005	50
00114104	75 ÷ 100	0,001	0,01	0,005	75
Inch models					
00124024	0 ÷ 1	0.00001	0.0001	0.00016	
00124025	1 ÷ 2	0.00001	0.0001	0.00016	1
00124026	2 ÷ 3	0.00001	0.0001	0.00020	2
00124027	3 ÷ 4	0.00001	0.0001	0.00020	3

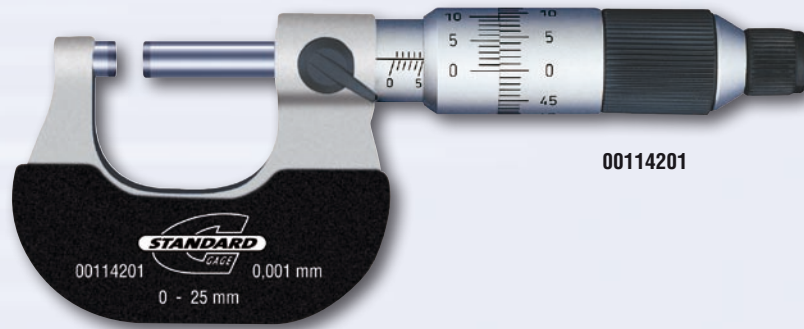
Sets of external micrometers with digit counter

Order number	Application range	Single micrometers	Setting standards
Metric models			
00114110	0 ÷ 75	3	25, 50
00114111	0 ÷ 100	4	25, 50, 75
Inch models			
00124028	0 ÷ 3	3	1, 2
00124029	0 ÷ 4	4	1, 2, 3

Full sets are supplied in a suited case with inspection report for each micrometer.



Measuring range	Dimensions (mm)	Dimensions (mm)			
		Metric (mm)	Inch (in)	A	B
0 ÷ 25	0 ÷ 1	24	6	3,0	32
25 ÷ 50	1 ÷ 2	32	8	3,0	57
50 ÷ 75	2 ÷ 3	45	8	3,0	82
75 ÷ 100	3 ÷ 4	57	10	3,0	107



00114201

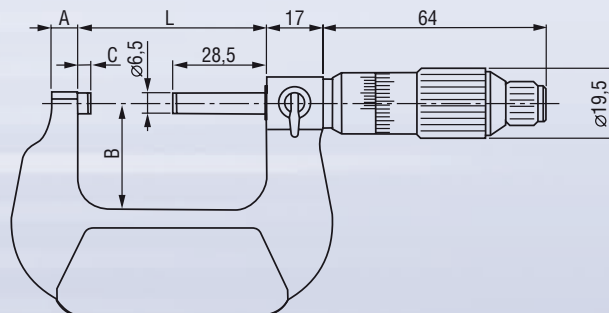
- Parallax-free vernier reading for high-precision measurements.
- Carbide-tipped measuring faces.
- Setting standards for sizes over 25 mm.
- Ratchet friction thimble and locking nut.
- Delivered in a suited case with inspection report.

Order number	Measuring range (mm)	Reading (mm)	Precision (mm)	Setting standards (mm)
00114201	0 ÷ 25	0,001	0,004	–
00114202	25 ÷ 50	0,001	0,004	25
00114203	50 ÷ 75	0,001	0,005	50
00114204	75 ÷ 100	0,001	0,005	75

Sets of external micrometers with parallax-free readout

Order number	Application range (mm)	Single micrometers	Setting standards (mm)
00114210	0 ÷ 75 mm	3	25, 50
00114211	0 ÷ 100 mm	4	25, 50, 75

Full sets are supplied in a suited case with inspection report to each micrometer.



Measuring range	Dimensions (mm)				
	Metric (mm)	A	B	C	L
0 ÷ 25		6	24	3,0	32
25 ÷ 50		8	32	3,0	57
50 ÷ 75		8	45	3,0	82
75 ÷ 100		8	57	3,0	107



EXTERNAL MICROMETERS



00114010



00114041

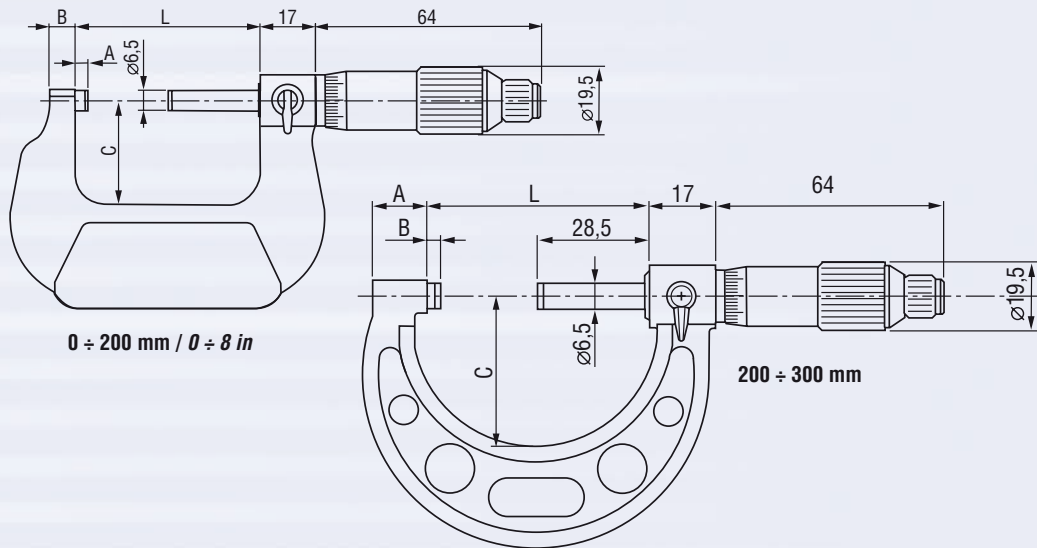
- Carbide-tipped measuring faces.
- Scale division 0,01 mm / 0.0001 in.
- Setting standard for sizes over 25 mm / 1 in.
- Ratchet friction thimble and locking nut.
- Delivered in a suited case with inspection report.

<i>Order number</i>	<i>Measuring range</i>	<i>Precision</i>	<i>Setting standards</i>
Metric models	mm	mm	mm
00114010	0 ÷ 25	0,004	—
00114011	25 ÷ 50	0,004	25
00114012	50 ÷ 75	0,005	50
00114013	75 ÷ 100	0,005	75
00114014	100 ÷ 125	0,006	100
00114015	125 ÷ 150	0,006	125
00114016	150 ÷ 175	0,007	150
00114017	175 ÷ 200	0,007	175
00114018	200 ÷ 225	0,008	200
00114019	225 ÷ 250	0,008	225
00114020	250 ÷ 275	0,009	250
00114021	275 ÷ 300	0,009	275
Inch models	in	in	in
00124010	0 ÷ 1	0.00016	—
00124011	1 ÷ 2	0.00016	1
00124012	2 ÷ 3	0.00020	2
00124013	3 ÷ 4	0.00020	3
00124014	4 ÷ 5	0.00024	4
00124015	5 ÷ 6	0.00024	5
00124016	6 ÷ 7	0.00028	6
00124017	7 ÷ 8	0.00028	7

Micrometer sets, external

<i>Order number</i>	<i>Measuring range</i>	<i>Single micrometers</i>	<i>Setting standards</i>
Metric models	mm		mm
00114040	0 ÷ 75	3	25, 50
00114041	0 ÷ 100	4	25, 50, 75
Inch models	in		in
00124040	0 ÷ 3	3	1, 2
00124041	0 ÷ 4	4	1, 2, 3

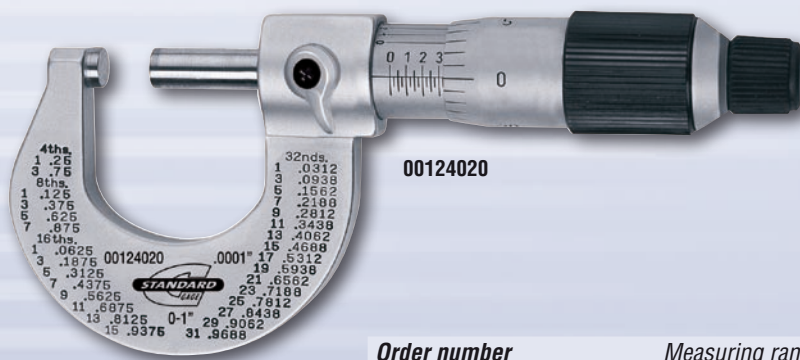
Full sets are supplied in a suited case with inspection report for each micrometer.



Measuring range		Dimensions (mm)			
Metric (mm)	Inch (in)	A	B	C	L
0 ÷ 25	0 ÷ 1	3,0	6	24	32
25 ÷ 50	1 ÷ 2	3,0	8	32	57
50 ÷ 75	2 ÷ 3	3,0	8	45	82
75 ÷ 100	3 ÷ 4	3,0	8	57	107
100 ÷ 125	4 ÷ 5	3,0	8	70	133
125 ÷ 150	5 ÷ 6	3,0	8	82	158
150 ÷ 175	6 ÷ 7	5,5	8	95	183
175 ÷ 200	7 ÷ 8	5,5	8	107	209
200 ÷ 225		5,5	19,4	130	234
225 ÷ 250		5,5	19,4	142	260
250 ÷ 275		5,5	19,4	155	285
275 ÷ 300		5,5	19,4	168	310

CHROME STEEL FRAME MICROMETERS

With decimal equivalents on the frame.



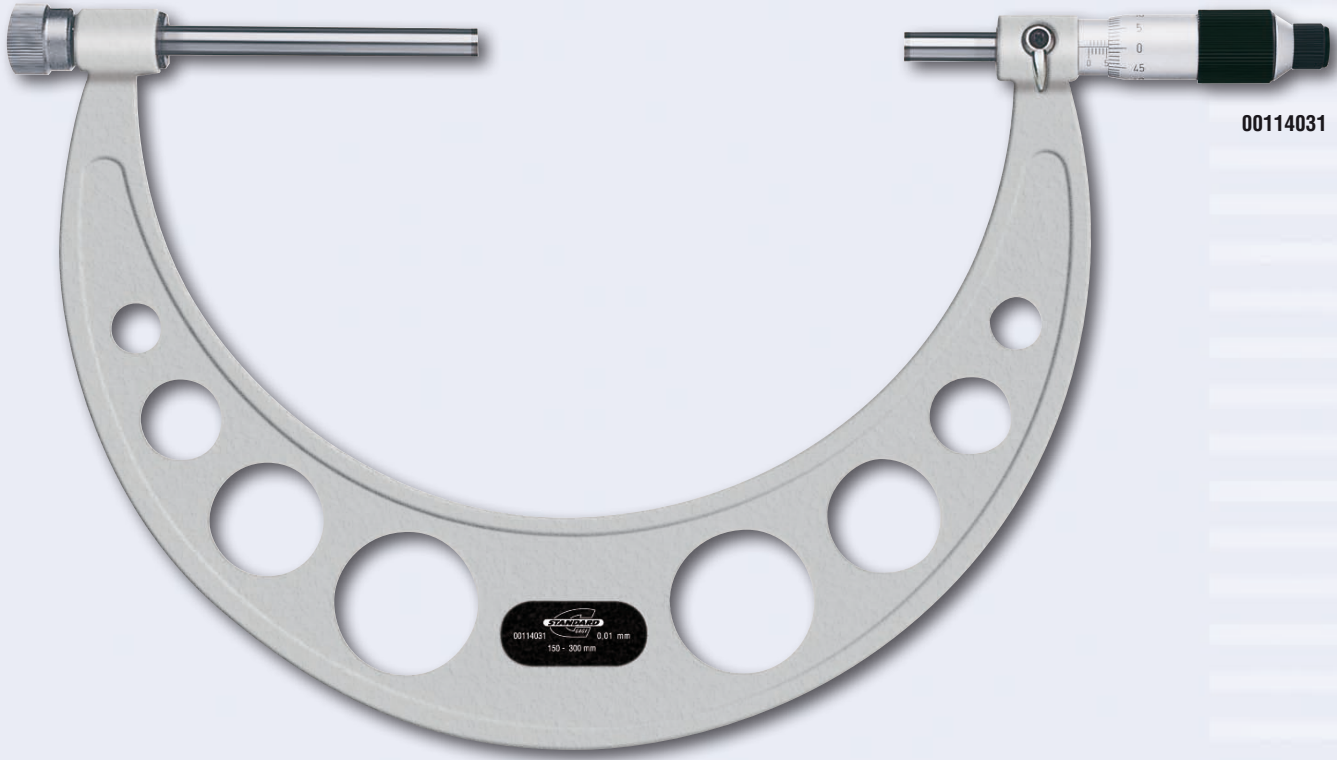
- Chrome steel frame with engraved black-coloured decimal equivalents.
- Carbide-tipped measuring faces, 0.25 in dia.
- Scale division to 0.0001 in.
- Setting standard for sizes over 25 mm/1 in.
- Ratchet friction thimble and locking nut.
- Delivered in a suited case with inspection report.

Order number	Measuring range	Precision	Setting standards
	in	in	in
00124020	0 ÷ 1	0.00016	
00124021	1 ÷ 2	0.00016	1
00124022	2 ÷ 3	0.00020	2



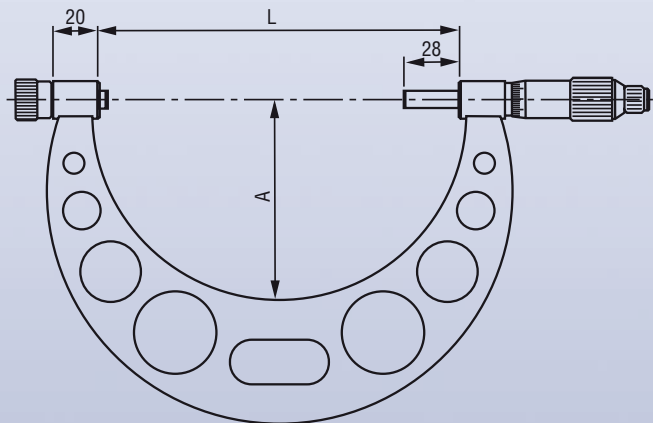
EXTERNAL MICROMETERS WITH INTERCHANGEABLE ANVILS

- Cast-iron frame up to 300 mm or tubular over 300 mm.
- Scale division to 0,01 mm.
- Setting standard included.
- Ratchet friction thimble and locking nut.
- Delivered in a suited case with inspection report.



00114031

Order number	Measuring range (mm)	Precision (mm)	A (mm)	L (mm)	Number of anvils	Number of setting standards
00114030	0 ÷ 150	0,006	82	158	6	5
00114031	150 ÷ 300	0,009	165	308	6	6
00114032	300 ÷ 450	0,011	250	459	6	6
00114033	450 ÷ 600	0,015	321	609	6	6
00114034	600 ÷ 750	0,016	401	759	6	6
00114035	750 ÷ 900	0,020	476	909	6	6
00114036	900 ÷ 1050	0,021	551	1059	6	6

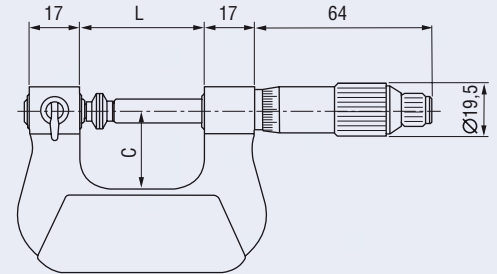


UNIVERSAL MICROMETERS, EXTERNAL - NON-ROTATING SPINDLE

- Wide application range through 7 pairs of interchangeable inserts.
- Hardened steel anvil.
- Graduations to 0,01 mm.
- Ratchet friction thimble and locking nut.
- Delivered in a suited case with inspection report.



00114055



Order number	Measuring range (mm)	Precision (mm)	C (mm)	L (mm)
00114055*	0 ÷ 25	0,004	26	42
00114056*	25 ÷ 50	0,004	38	67
00114057*	50 ÷ 75	0,005	50	92
00114058*	75 ÷ 100	0,005	62	118

*Supplied with 7 pairs of measuring inserts



INTERCHANGEABLE INSERTS IN PAIRS

Order number	Description
00164001	Flat, 6,5 mm dia.
00164002	Spherical, R = 5 mm
00164003	Small and flat, 2 mm dia.
00164004	Disk-shaped, 12 mm dia.
00164005	Blade-type, H x L = 0,7 x 3,5 mm
00164006	Cone-shaped, 60°, R = 0,3 mm
00164007	Knife-edged, 60°, 0,3 mm
00164008	Full set including 7 pairs of measuring inserts

00164003		
00164004		
00164005		
00164006		
00164007		

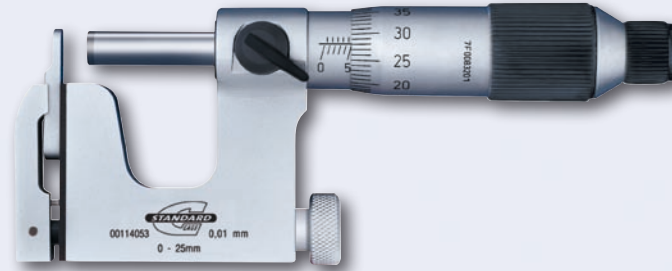
00164001

00164002

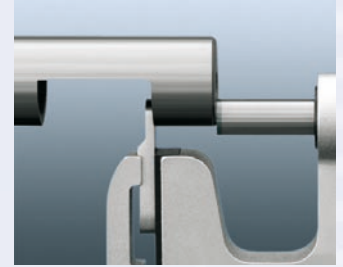
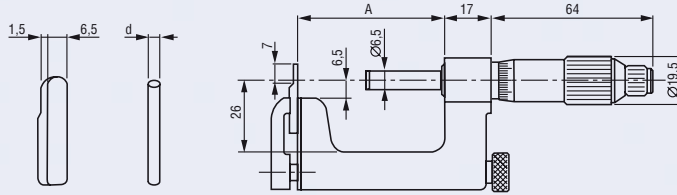


UNIVERSAL MICROMETERS, EXTERNAL

- Spindle end with a carbide-tipped insert.
- Hardened steel anvil.
- Chrome-plated frame.
- Scale division to 0,01 mm.
- Ratchet friction thimble and locking nut.
- Delivered in a suited case with inspection report.



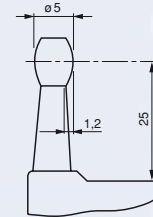
00114053



Order number	Measuring range (mm)	Precision (mm)	A (mm)	d (mm)
00114053	0 ÷ 25	0,004	28,5	3
00114054	25 ÷ 50	0,004	53,5	5

EXTERNAL MICROMETER FOR TUBE WALL THICKNESS

- Spindle fitted with a carbide-tipped insert.
- Hardened steel anvil.
- Scale division to 0,01 mm.
- Ratchet friction thimble and locking nut.
- Delivered in a suited case with inspection report.



Order number	Measuring range (mm)	Precision (mm)
00114052	0 ÷ 25	0,006

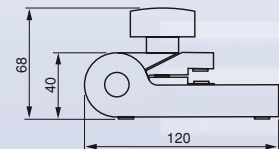
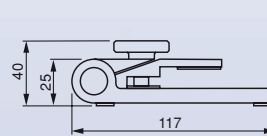
ADJUSTABLE MICROMETER STANDS



00164009



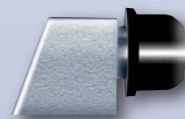
00164010



Order number	Description
00164009	Micrometer stand
00164010	Micrometer stand – Heavy model

INTERCHANGEABLE SPHERICAL ANVIL

Used for measuring tube wall thickness. Fitted with a steel ball, 5 mm/0.2 in.



Order number	Description
00164011	Interchangeable spherical anvil

TOOL SETS WITH DIGITAL INDICATION OR VERNIER READING



00514100



00524100



00534100

Order number Description

Tool set with vernier reading, metric

00514100	Tool set including:	
	1 Micrometer with a 0 ÷ 25 mm measuring range, reading to 0,01 mm	00114010
	1 Caliper with a 0 ÷ 150 mm measuring range, vernier reading to 0,05 mm	00514011
	1 Black coloured plastic case	
	1 Inspection report provided with each tool	

Tool set with vernier reading, inch

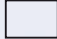
00524100	Tool set including:	
	1 Micrometer with a 0 ÷ 1 in measuring range, reading to 0.0001 in	00124010
	1 Caliper with a 0 ÷ 6 in measuring range, vernier reading to 0.001 in/1/128 in	00524001
	1 Black coloured plastic case	
	1 Inspection report provided with each tool	


Tool set with numerical indication, metric


00534100	Tool set including:	
	1 Electronic micrometer, 0 ÷ 25 mm measuring range, resolution to 0,001 mm	00134001
	1 Caliper with a 0 ÷ 150 mm measuring range, resolution to 0,01 mm	00534020
	1 Black coloured plastic case	
	1 Inspection report provided with each tool	





SETTING STANDARDS

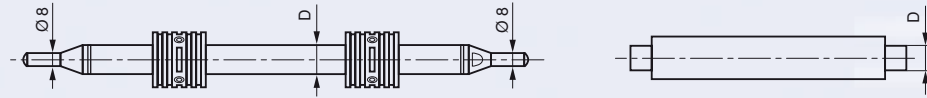
 Flat measuring faces












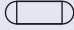
















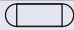


 Spherical measuring faces








 For calibrating the zero position on external micrometers.

 With heat insulating handle.

 Supplied with inspection report.



Order number	Nominal dimensions	Precision	D	Measuring faces
Metric	mm	mm	mm	
02164001	25	± 0,0012	7	
02164002	50	± 0,0012	7	
02164003	75	± 0,0015	7	
02164004	100	± 0,0020	8	
02164005	125	± 0,0025	8	
02164006	150	± 0,0025	8	
02164007	175	± 0,0025	8	
02164008	200	± 0,0035	8	
02164009	225	± 0,0035	8	
02164010	250	± 0,0035	8	
02164011	275	± 0,0040	8	
02164012	300	± 0,0040	16	
02164013	325	± 0,0045	16	
02164014	350	± 0,0045	16	
02164015	375	± 0,0045	16	
02164016	400	± 0,0045	16	
02164017	425	± 0,0050	16	
02164018	450	± 0,0050	16	
02164019	475	± 0,0050	16	
02164020	500	± 0,0050	16	
02164021	525	± 0,0055	16	
02164022	575	± 0,0055	16	
02164023	625	± 0,0055	16	
02164024	675	± 0,0065	16	
02164025	725	± 0,0065	16	
02164026	775	± 0,0065	16	
02164027	825	± 0,0075	16	
02164028	875	± 0,0075	16	
02164029	925	± 0,0075	16	
02164030	975	± 0,0075	16	
02164031	1050	± 0,0090	23	

Order number	Nominal dimensions	Precision	D	Measuring faces
Inch	in	in	in	
02164101	1	± 0.00008	0.276	
02164102	2	± 0.00008	0.276	
02164103	3	± 0.00008	0.276	
02164104	4	± 0.00012	0.315	
02164105	5	± 0.00016	0.315	
02164106	6	± 0.00016	0.315	
02164107	7	± 0.00020	0.315	



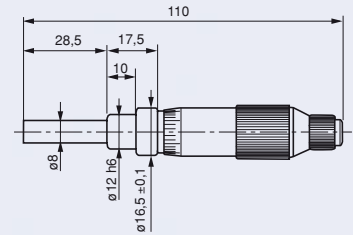
MICROMETER HEADS WITH NON-ROTATING SPINDLE

- Spindle end with a carbide-tipped insert.
- Ratchet friction thimble and locking nut.
- Delivered in a suited case with inspection report.



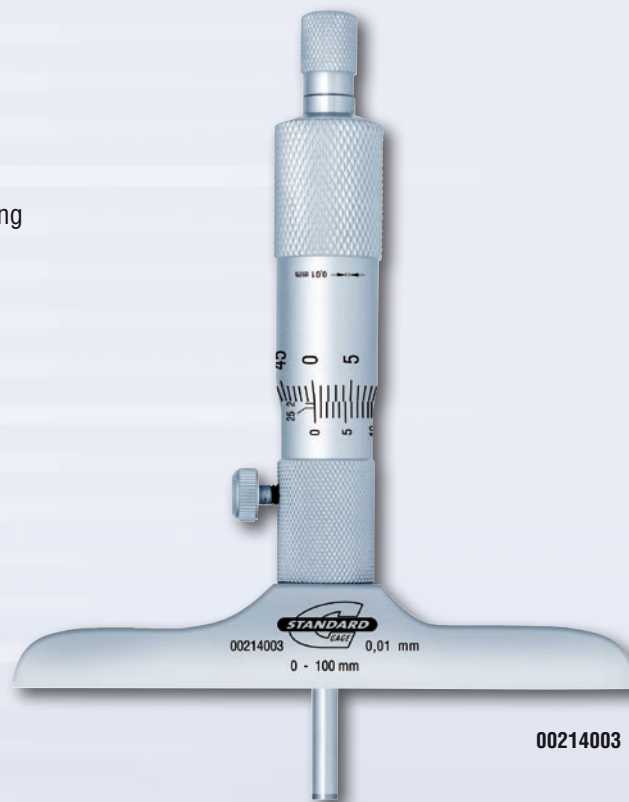
00114050

Order number	Measuring range (mm)	Reading (mm)	Precision (mm)
00114050	0 ÷ 25	0,01	0,003
00114051	0 ÷ 25	0,002	0,003

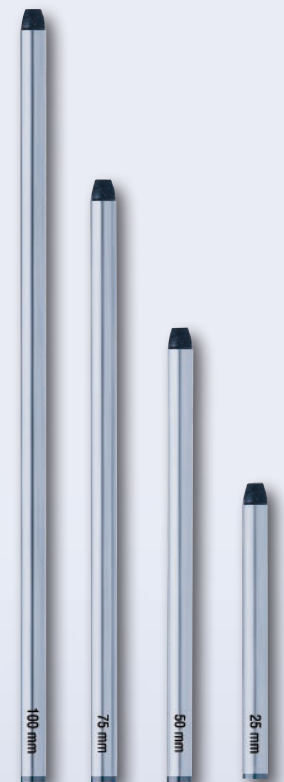


DEPTH MICROMETERS WITH VERNIER READING

- High-precision, interchangeable depth rods, adjusted in increments of 25 mm / 1 in. No Need for resetting when changing rods.
- Rod diameter 4,5 mm.
- Satin chrome finish.
- Hardened steel base, ground and lapped.
- Resolution: 0,01 mm for metric models. 0.001 in for inch models.
- Ratchet stop and locking nut.
- Supplied in a suited case with inspection report.



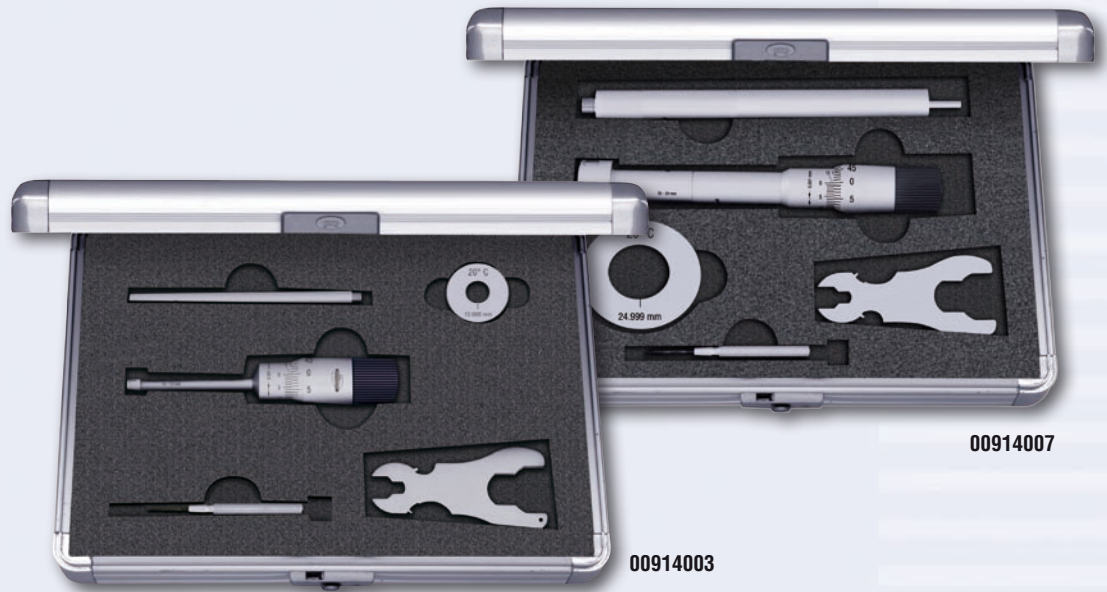
00214003



Order number	Measuring range	Precision	Depth foot	Number of depth rods
Metric models				
00214001	0 ÷ 100	0,005	63	4
00214002	0 ÷ 150	0,005	63	4
00214003	0 ÷ 100	0,005	101,5	6
00214004	0 ÷ 150	0,005	101,5	6
Inch models				
00224001	0 ÷ 4	0.00020	2.5	4
00224002	0 ÷ 6	0.00020	2.5	4
00224003	0 ÷ 4	0.00020	4	6
00224004	0 ÷ 6	0.00020	4	6



THREE-POINT MICROMETERS, INTERNAL



Application range 6 to 100 mm or 0.275 in to 4 in

- Measure close to the bottom of blind bores.
- Allow access to deep holes using an extension delivered in standard.
- Carbide-tipped contact points for measuring application 12 ÷ 100 mm / 0.5 ÷ 4 in.
- Supplied in a suited case along with setting ring, extension rod, inspection report.

Order number	Measuring range	Scale division	Precision	Setting rings	L1	A	Extension rods
Metric models							
00914001	6 ÷ 8	0,001	0,004	6	53,5	0,5	100
00914002	8 ÷ 10	0,001	0,004	8	53,5	0,5	100
00914003	10 ÷ 12	0,001	0,004	10	53,5	0,5	100
00914004	12 ÷ 16	0,005	0,004	16	80	0,5	150
00914005	16 ÷ 20	0,005	0,004	16	80	0,5	150
00914006	20 ÷ 25	0,005	0,004	25	90	0,5	150
00914007	25 ÷ 30	0,005	0,004	25	90	0,5	150
00914008	30 ÷ 40	0,005	0,004	40	97	0,5	150
00914009	40 ÷ 50	0,005	0,005	40	97	0,5	150
00914010	50 ÷ 63	0,005	0,005	62	114	0,5	150
00914011	62 ÷ 75	0,005	0,005	62	114	0,5	150
00914012	75 ÷ 88	0,005	0,005	87	114	0,5	150
00914013	87 ÷ 100	0,005	0,005	87	114	0,5	150
Inch models							
00924001	0.275 ÷ 0.35	0.0001	0.00016	0.275	2.14	0.02	4
00924002	0.35 ÷ 0.425	0.0001	0.00016	0.350	2.14	0.02	4
00924003	0.425 ÷ 0.5	0.0001	0.00016	0.500	2.14	0.02	4
00924004	0.5 ÷ 0.65	0.0002	0.00016	0.65	3.2	0.02	6
00924005	0.65 ÷ 0.8	0.0002	0.00016	0.65	3.2	0.02	6
00924006	0.8 ÷ 1	0.0002	0.00016	1	3.6	0.02	6
00924007	1 ÷ 1.2	0.0002	0.00016	1	3.6	0.02	6
00924008	1.2 ÷ 1.6	0.0002	0.00016	1.6	3.88	0.02	6
00924009	1.6 ÷ 2	0.0002	0.00020	1.6	3.88	0.02	6
00924010	2 ÷ 2.5	0.0002	0.00020	2.5	4.56	0.02	6
00924011	2.5 ÷ 3	0.0002	0.00020	2.5	4.56	0.02	6
00924012	3 ÷ 3.5	0.0002	0.00020	3.5	4.56	0.02	6
00924013	3.5 ÷ 4	0.0002	0.00020	3.5	4.56	0.02	6

SETS OF THREE-POINT MICROMETERS, INTERNAL



00914023

<i>Order number</i>	<i>Measuring range</i>	<i>Single micrometers</i>		<i>Setting rings</i>		<i>Extension rods</i>	
		<i>No.</i>	<i>mm</i>	<i>No.</i>	<i>mm</i>	<i>No.</i>	<i>mm</i>
Metric sets	mm						
00914020	6 ÷ 12	00914001	6 ÷ 8	00944004	6		
		00914002	8 ÷ 10	00944005	8	00964001	100
		00914003	10 ÷ 12	00944006	10		
00914021	12 ÷ 20	00914004	12 ÷ 16	00944008	16	00964002	150
		00914005	16 ÷ 20				
00914022	20 ÷ 50	00914006	20 ÷ 25	00944010	25	00964003	150
		00914007	25 ÷ 30				
		00914008	30 ÷ 40	00944012	40	00964004	150
		00914009	40 ÷ 50				
00914023	50 ÷ 100	00914010	50 ÷ 63	00944014	62		
		00914011	62 ÷ 75			00964005	150
		00914012	75 ÷ 88	00944017	87		
		00914013	87 ÷ 100				
Inch sets	in	<i>No.</i>	<i>in</i>	<i>No.</i>	<i>in</i>	<i>No.</i>	<i>in</i>
00924020	0.275 ÷ 0.5	00924001	0.275 ÷ 0.35	00954003	0.275		
		00924002	0.35 ÷ 0.425	00954004	0.35	00964006	4
		00924003	0.425 ÷ 0.5	00954006	0.5		
00924021	0.5 ÷ 0.8	00924004	0.5 ÷ 0.65	00954007	0.65	00964007	6
		00924005	0.65 ÷ 0.8				
00924022	0.8 ÷ 2	00924006	0.8 ÷ 1	00954009	1	00964008	6
		00924007	1 ÷ 1.2				
		00924008	1.2 ÷ 1.6	00954011	1.6	00964009	6
		00924009	1.6 ÷ 2				
00924023	2 ÷ 4	00924010	2 ÷ 2.5	00954013	2.5		
		00924011	2.5 ÷ 3			00964010	6
		00924012	3 ÷ 3.5	00954016	3.5		
		00924013	3.5 ÷ 4				

Full sets are supplied in a suited case with inspection report for each micrometer.



EXTENSION RODS FOR THREE-POINT MICROMETERS



Order number	Description	Length
	mm / in	mm / in
00964001	Extension rod for measuring range 6 ÷ 12 / 0.275 ÷ 0.500	100 / 4
00964002	Extension rod for measuring range 12 ÷ 20 / 0.500 ÷ 0.800	150 / 6
00964003	Extension rod for measuring range 20 ÷ 30 / 0.800 ÷ 1.2	150 / 6
00964004	Extension rod for measuring range 30 ÷ 50 / 1.2 ÷ 2	150 / 6
00964005	Extension rod for measuring range 50 ÷ 100 / 2 ÷ 4	150 / 6



SETTING RINGS

Used to set internal micrometers and three-point micrometers to zero.

■ Inspection report included.

- A Uncertainty of engraved diameter
- B Cylindricity

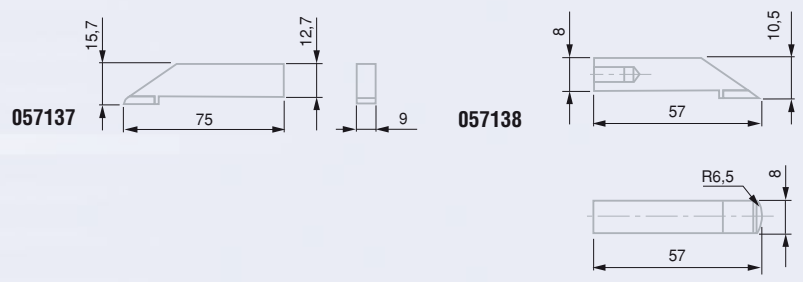
Order number	Diameter	A	B
Metric	mm	mm	mm
00944004	6	± 0,0015	0,0010
00944005	8	± 0,0015	0,0010
00944006	10	± 0,0015	0,0010
00944008	16	± 0,0015	0,0010
00944010	25	± 0,0015	0,0010
00944012	40	± 0,0015	0,0010
00944014	62	± 0,0015	0,0015
00944017	87	± 0,0015	0,0015
Inch	in	in	in
00954003	0.275	± 0.00006	0.00004
00954004	0.350	± 0.00006	0.00004
00954006	0.500	± 0.00006	0.00004
00954007	0.650	± 0.00006	0.00004
00954009	1.000	± 0.00006	0.00004
00954011	1.600	± 0.00006	0.00004
00954013	2.500	± 0.00006	0.00006
00954016	3.500	± 0.00006	0.00006



SCRIBING GAUGES

- Robust construction in stainless steel.
- Smooth move throughout the measuring range.
- Supplied in a suited case with inspection report.

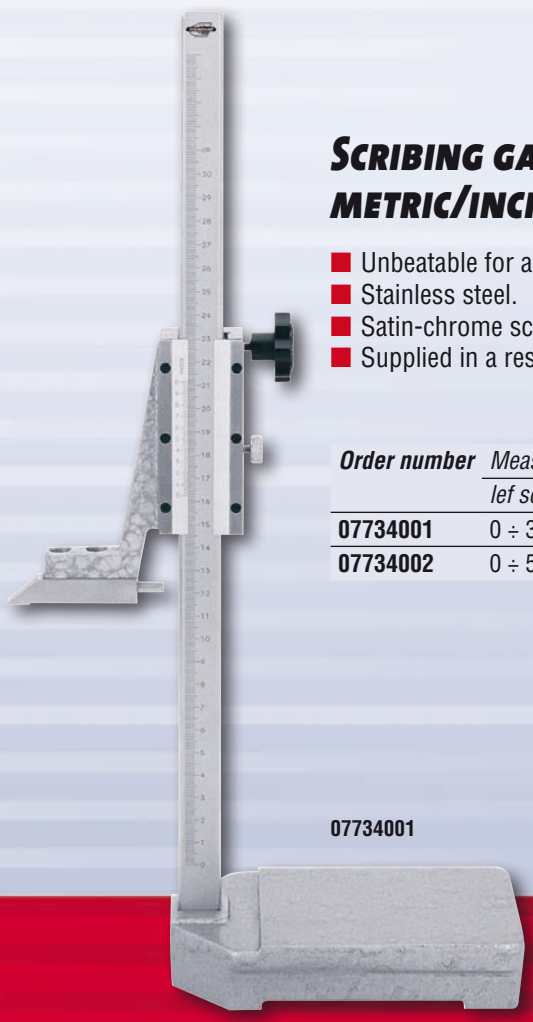
<i>Order number</i>	<i>Measuring range</i>	<i>Scale division</i>	<i>Travel per revolution</i>	<i>Dial face</i>	<i>Scriber</i>
Metric models					
07714001	300	0,01	1,0	white	057137
07714002	600	0,02	2,0	white	057138
Inch models					
07724001	12	0.001	0.100	white	057137
07724002	24	0.001	0.100	white	057138



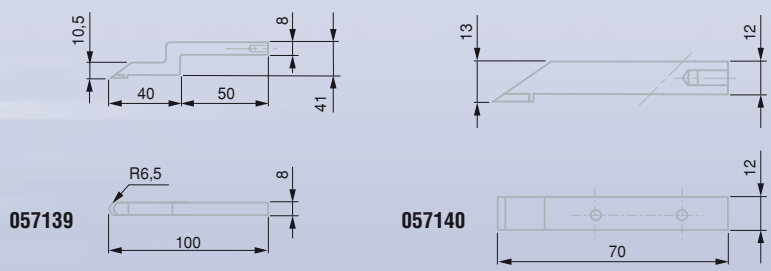
07714001

SCRIBING GAUGES WITH METRIC/INCH VERNIER READING

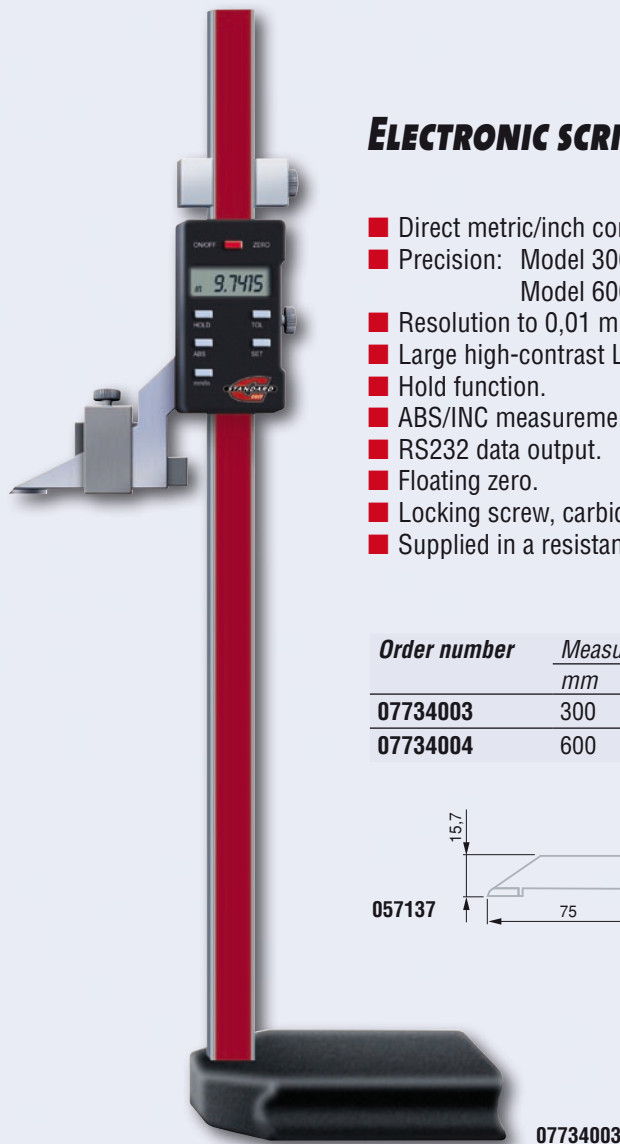
- Unbeatable for accurate and reliable scribing.
- Stainless steel.
- Satin-chrome scale and vernier backgrounds.
- Supplied in a resistant case with inspection report.



<i>Order number</i>	<i>Measuring range</i>		<i>Vernier reading</i>		<i>Scriber</i>
	<i>lef scale</i>	<i>right scale</i>	<i>lef scale</i>	<i>right scale</i>	
07734001	0 ÷ 300 mm	0 ÷ 12 in	0,02 mm	0.001 in	057139
07734002	0 ÷ 500 mm	0 ÷ 20 in	0,02 mm	0.001 in	057140



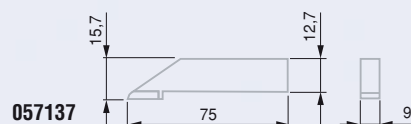
07734001



ELECTRONIC SCRIBING GAUGES

- Direct metric/inch conversion.
- Precision: Model 300 mm/12 in: $\pm 0,04$ mm.
Model 600 mm/24 in: $\pm 0,05$ mm.
- Resolution to 0,01 mm/0.0005 in.
- Large high-contrast LC display.
- Hold function.
- ABS/INC measurement.
- RS232 data output.
- Floating zero.
- Locking screw, carbide scriber.
- Supplied in a resistant case with inspection report.

Order number	Measuring range		Scriber
	mm	in	
07734003	300	12	057137
07734004	600	24	057137

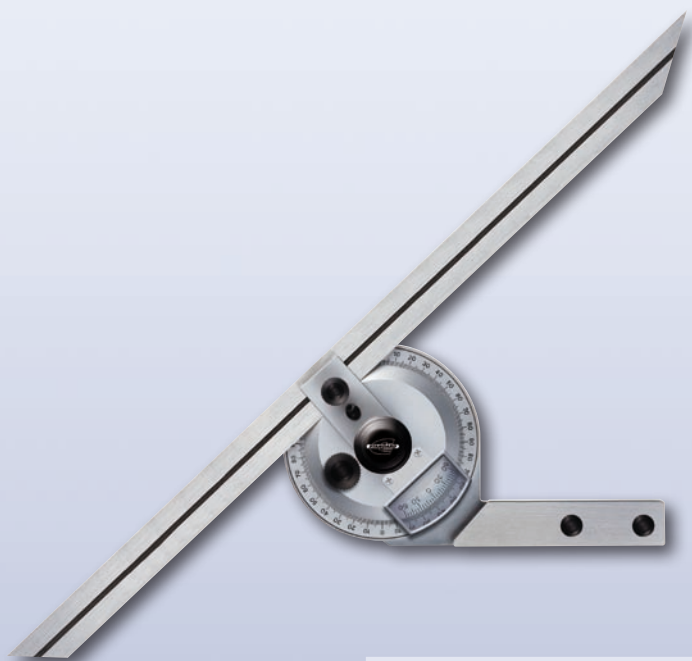


057137

07734003

UNIVERSAL BEVEL PROTRACTOR, WITH VERNIER READING, 300 MM / 12 IN

- Made from stainless steel.
- Laser stamped scales, satin-chrome backgrounds.
- Parallax-free readout.
- Magnifying glass for easy reading.
- Adjustable beam to any position within the entire range.



Order number	Measuring range	Reading	Scale Length
00634001	4 x 90°	5'	300 mm / 12 in

PRECISION DIAL GAUGES

- Full-metal bezel and case housing.
- Shank and plunger in hardened stainless steel.
- Steel ball tip with a 3,175 mm diameter.
- Adjustable tolerance pointers.
- Measuring insert with a M2,5 clamping thread.
- Shank with a 8h6 mm dia. for metric dial gauges.
- Delivered in a suited case with inspection report.

MODELS WITH A 40 MM DIAL DIAMETER, READING 0,01 MM

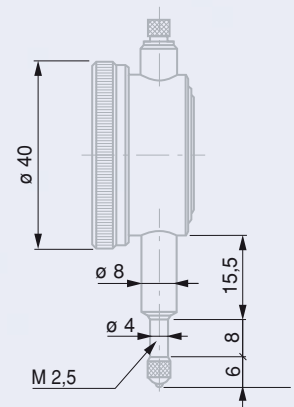
- With extra red tinted reverse numbering.



01414001



01414002



Order number	Measuring span	Reading	Travel/Rev.	Movement	Circular scale
01414001	3 mm	0,01 mm	1 mm	6 Jewelled	0 ÷ 50 ÷ 100
01414002	5 mm	0,01 mm	1 mm	6 Jewelled	0 ÷ 50 ÷ 100

Maximum permissible errors

0,01 mm Reading	Measuring span	
	3 mm	5 mm
Deviation span	10 µm	12 µm
Total deviation span	12 µm	14 µm
Max. hysteresis	3 µm	3 µm
Local deviation span (0,1 mm)	5 µm	5 µm
Repeatability limit	3 µm	3 µm



MODELS WITH A 58 MM DIAL DIA., 0,01 MM

■ With extra red tinted reverse numbering

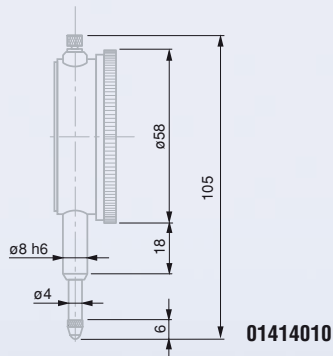
Maximum permissible errors (MPE)

Scale division 0,01 mm	Measuring spans		
	10 mm	20 mm	30 mm
Deviation span of indication	15 µm	22 µm	28 µm
Total deviation span of indication	17 µm	25 µm	30 µm
Max. hysteresis	3 µm	5 µm	5 µm
Deviation span of indication (local deviation span of 0,1 mm)	5 µm	10 µm	10 µm
Repeatability limit	3 µm	3 µm	3 µm



Order number	Measuring span	Scale division	Travel per revolution	Circular scale	Movement
01414010	10 mm	0,01 mm	1 mm	0 ÷ 50 ÷ 100	
01414011	10 mm	0,01 mm	1 mm	0 ÷ 50 ÷ 100	Rubis
01414012	10 mm	0,01 mm	1 mm	0 ÷ 50 ÷ 100	Rubis – Shockproof
01414013	10 mm	0,01 mm	1 mm	0 ÷ 50 ÷ 100	Waterproof
01414014	20 mm	0,01 mm	1 mm	0 ÷ 50 ÷ 100	
01414015	30 mm	0,01 mm	1 mm	0 ÷ 50 ÷ 100	

Waterproof model without tolerance pointers.



MODELS WITH A 58 MM DIAL DIA., 0,002 OR 0,001 MM

Order number	Measuring span	Scale division	Travel per revolution	Circular scale	Movement
01414020	3 mm	0,001 mm	0,2 mm	0 ÷ 10 ÷ 20	Ruby – Shockproof
01414021	3 mm	0,002 mm	0,2 mm	0 ÷ 10 ÷ 20	Ruby – Shockproof
01414022	5 mm	0,001 mm	0,2 mm	0 ÷ 10 ÷ 20	Ruby – Shockproof
01414023	5 mm	0,002 mm	0,2 mm	0 ÷ 10 ÷ 20	Ruby – Shockproof

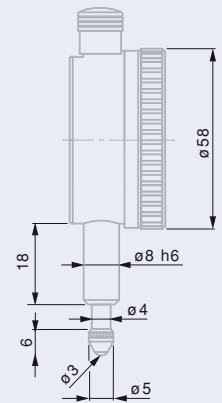
Maximum permissible errors (MPE)

Measuring spans	1 mm		3 mm		5 mm	
Scale division	0,001 mm	0,002 mm	0,001 mm	0,002 mm	0,001 mm	0,001 mm
Deviation span of indication	5 µm	9 µm	8 µm	12 µm	9 µm	9 µm
Total deviation span of indication	6 µm	10 µm	9 µm	13 µm	10 µm	10 µm
Hystérésis max.	3 µm	4 µm	4 µm	4 µm	4 µm	4 µm
Deviation span of indication (local deviation span of 0,1 mm)	3 µm	7 µm	6 µm	7 µm	6 µm	6 µm
Repeatability limit	0,3 µm	1 µm	1 µm	1 µm	1 µm	1 µm



HP MODELS WITH A 58 MM DIAL DIAMETER, 0,001 MM

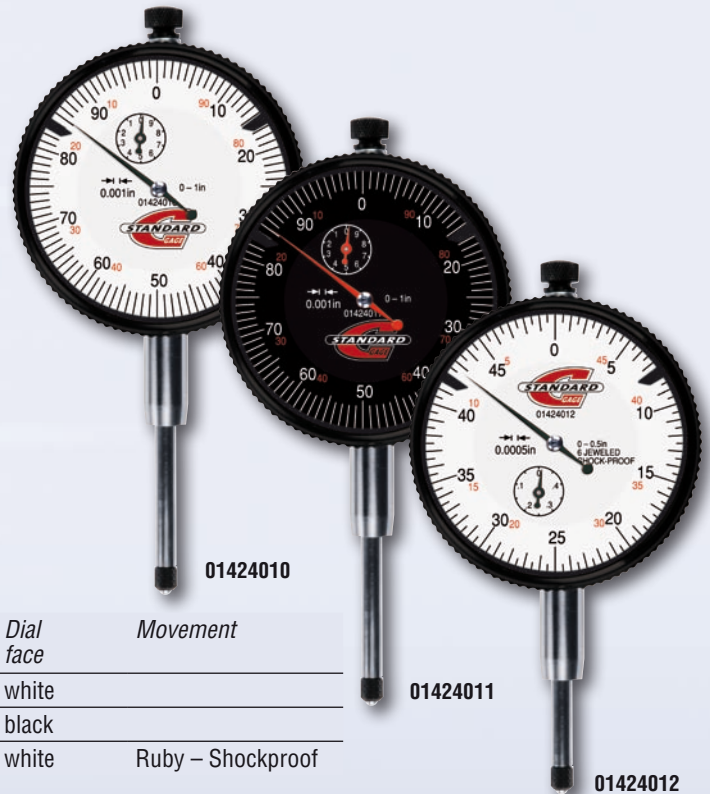
- 1 mm measuring span.
- High-precision.
- Shockproof design.
- Ruby bearing movement.



Order number	Measuring span	Scale division	Travel per revolution	Dial face
01414030	1 mm	0.001 mm	0,2 mm	white

AGD2 DIAL INDICATORS

- Measuring travel 1 in.
- Continuous reading 0 ÷ 100 in.
- Dial diameters from 2 up to 1/4 in.
- Revolution counter.
- Tolerance pointers.
- Central lug back.
- Carbide contact point.
- AGD2 clamping shank with diameter to 0.375 in.
- Supplied in a case made of industrial plastic with inspection report.



Order number	Measuring span	Scale division	Travel per revolution	Dial face	Movement
01424010	1 in	0.001 in	0.100 in	white	
01424011	1 in	0.001 in	0.100 in	black	
01424012	0.5 in	0.0005 in	0.05 in	white	Ruby – Shockproof

Maximum permissible errors (MPE)

	Scale division 0.001 / 0.0005	
	Measuring span 0.5 in	1 in
Repeatability	0.20 scale division	0.20 scale division
Hysteresis	0.33 scale division	0.33 scale division
Precision		
1 revolution	1.00 scale division	1.00 scale division
First revolution up to 2,5	1.00 scale division	1.00 scale division
> 2,5 thru 10 revolutions	3.00 scale division	2.00 scale division

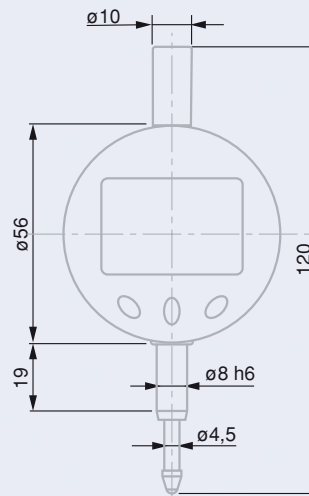
Standard accessories

Order number	Description
01464001	Central lug back for indicators with a 40 mm dial diameter
01464002	Central lug back for indicators with a 58 mm dial diameter



ELECTRONIC COMPARATORS

- 8 mm diameter shank.
- LC display, 10,5 mm digit height.
- PRESET function.
- Metric/inch conversion.
- ON/OFF function
- ABS/DIFF modes.
- CR2032 battery type.
- Supplied in a case made of industrial plastic with inspection report.



Order number	Measuring span		Scale division		MPE μm	Repeatability μm
	mm	in	mm	in		
01434001	12,5	0.5	0,01	0.0005	20	10
01434002	25	1	0,01	0.0005	20	10

STANDS FOR DIAL GAUGES AND COMPARATORS

- Dovetail clamp.
- 8 mm diameter fixing bore.
- Adherence on a flat surface ≈ 588 N.



01664001



01664002



01664003

<i>Order number</i>	<i>Description</i>	<i>Arm length (mm)</i>	<i>Fixing bore (mm)</i>	<i>Magnetic force (N)</i>	<i>Weight (kg)</i>
01664001	Magnetic stand	176 x 165	$\varnothing 8 \div 9,6$	588	1,5
01664002	Articulated arm	280 max.	$\varnothing 8$	588	1,5
01664003	Flexible arm	350 max.	$\varnothing 8 \div 9,6$	588	1,5



LEVER-TYPE DIAL INDICATORS, METRIC

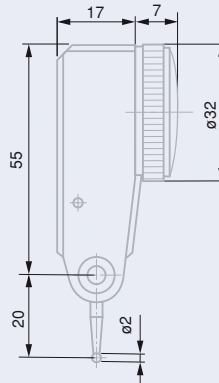
- Small and large dial diameters.
- Resolution to 0,01 or 0,002 mm.
- Ruby or carbide contact point.
- Supplied in a case made of industrial plastic with inspection report.



01814010



01814013



Maximum permissible errors (MPE)

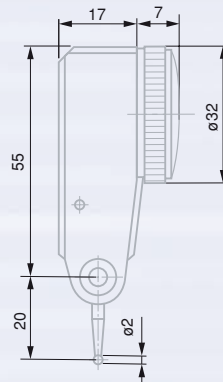
	Scale division	
	0,01 mm	0,002 mm
Deviation span of indication	10 μm	2 μm
Total deviation span of indication	13 μm	3,5 μm
Hysteresis max.	3 μm	2 μm
Deviation span of indication (local measuring span 0,1 mm)	5 μm	1 μm
Repeatability limit	3 μm	1 μm

Metric models

Order number	Measuring span	Scale division	Diameter	Dial face	Contact points		
					Diameter	Materials	Length
01814010	0,8 mm	0,01 mm	32 mm	white	2 mm	Carbide	19 mm
01814011	0,8 mm	0,01 mm	38 mm	white	2 mm	Carbide	19 mm
01814012	0,8 mm	0,01 mm	32 mm	white	2 mm	Ruby	19 mm
01814013	0,8 mm	0,01 mm	38 mm	white	2 mm	Ruby	19 mm
01814020	0,2 mm	0,002 mm	32 mm	white	2 mm	Carbide	19 mm
01814021	0,2 mm	0,002 mm	40 mm	white	2 mm	Carbide	19 mm
01814022	0,2 mm	0,002 mm	32 mm	white	2 mm	Ruby	19 mm
01814023	0,2 mm	0,002 mm	40 mm	white	2 mm	Ruby	19 mm

LEVER-TYPE DIAL INDICATORS, INCH

- Small and large dial diameters.
- Resolution to 0.001, 0.0001 or 0.0005 in.
- Carbide contact point.
- Supplied in a case made of industrial plastic with inspection report.



01824001



01824006

Maximum permissible errors (MPE)

	Scale division	
	0.001 / 0.005 in	0.0001 in
Deviation span of indication	0.4 μ in	0.08 μ in
Total deviation span of indication	0.5 μ in	0.14 μ in
Hysteresis max.	0.12 μ in	0.08 μ in
Deviation span of indication (local measuring span 0,1 mm)	0.2 μ in	0.04 μ in
Repeatability limit	0.12 μ in	0.08 μ in

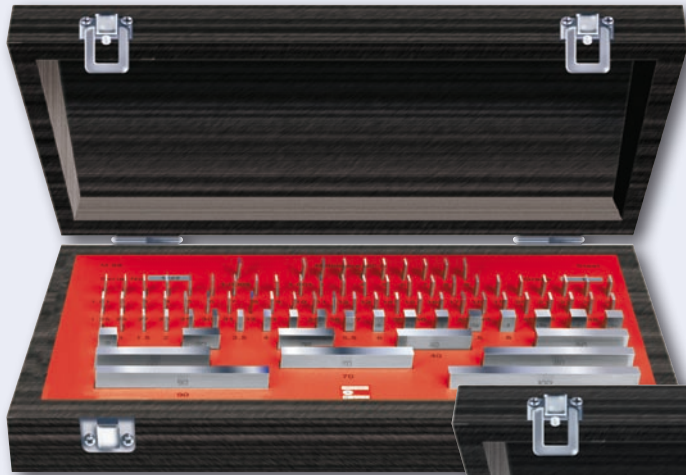
Inch models

Order number	Measuring span	Scale division	Diameter	Dial face	Contact points		
					Diameter	Materials	Length
01824001	0.03 in	0.001 in	1.26 in	white	0,08 in	carbide	0.7 in
01824002	0.03 in	0.001 in	1.26 in	black	0,08 in	carbide	0.7 in
01824003	0.03 in	0.0005 in	1.26 in	white	0,08 in	carbide	0.7 in
01824004	0.03 in	0.0005 in	1.26 in	black	0,08 in	carbide	0.7 in
01824005	0.03 in	0.0005 in	1.54 in	white	0,08 in	carbide	0.7 in
01824006	0.03 in	0.0005 in	1.54 in	black	0,08 in	carbide	0.7 in
01824011	0.008 in	0.0001 in	1.26 in	white	0,08 in	carbide	0.64 in
01824012	0.008 in	0.0001 in	1.26 in	black	0,08 in	carbide	0.64 in
01824013	0.008 in	0.0001 in	1.54 in	white	0,08 in	carbide	0.64 in
01824014	0.008 in	0.0001 in	1.54 in	black	0,08 in	carbide	0.64 in

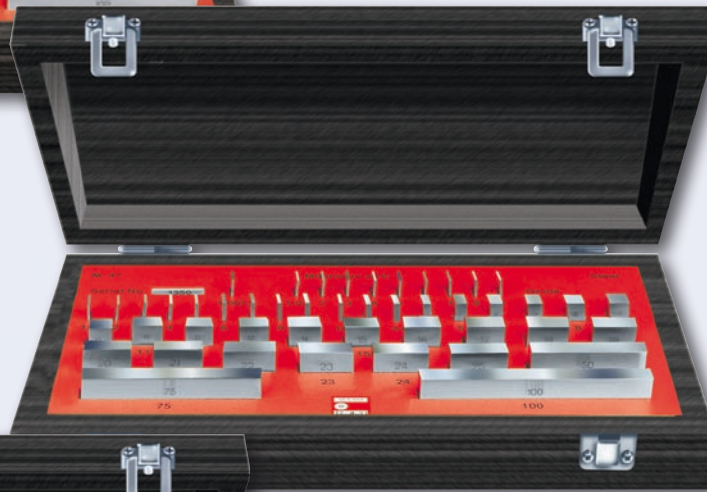


SETS OF STEEL GAUGE BLOCKS, METRIC

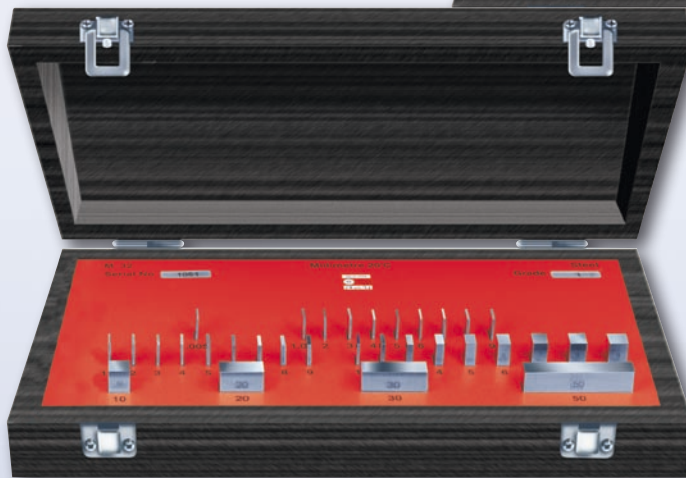
- M103, M87, M47, M32 gauge block sets.
- Accuracy grades 1 and 2.
- Complying with ISO 3650 .
- Provided in a wooden case with inspection report.



06511102



06511103



06511104

<i>Order number</i>	<i>Description</i>	<i>Grades</i>	<i>Weight (kg)</i>
06511101*	M103 block set	1	2,2
06511102*	M87 block set	1	1,8
06511103*	M47 block set	1	1,5
06511104*	M32 block set	1	1,3
06511201*	M103 block set	2	2,2
06511202*	M87 block set	2	1,8
06511203*	M47 block set	2	1,5
06511204*	M32 block set	2	1,3

* Available from April 2011

Set compositions

103-piece set

Dimensions (mm)	Steps (mm)	Pieces
1,005	–	1
1,01 ÷ 1,49	0,01	49
0,5 ÷ 24,5	0,5	49
25 ÷ 100	25	4

87-piece set

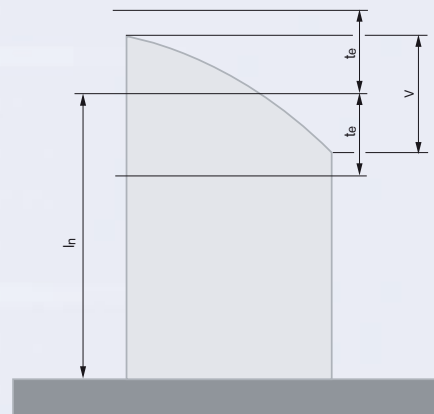
Dimensions (mm)	Steps (mm)	Pieces
1,001 ÷ 1,009	0,001	9
1,01 ÷ 1,49	0,01	49
0,5 ÷ 9,5	0,5	19
10 ÷ 100	10	10

47-piece set

Dimensions (mm)	Steps (mm)	Pieces
1,005	–	1
1,01 ÷ 1,19	0,01	19
1,2 ÷ 1,9	0,5	8
1 ÷ 9	1	9
10 ÷ 100	10	10

32-piece set

Dimensions (mm)	Steps (mm)	Pieces
1,005	–	1
1,01 ÷ 1,09	0,01	9
1,1 ÷ 1,9	0,1	9
1 ÷ 9	1	9
10, 20, 30, 50	–	4



Nominal length l_n ;
variation v , limit
deviations t_e at any
point against
the nominal length.

Nominal length	Grade 1		Grade 2	
	Limit deviation at any point against the nominal length	Tolerance for the variation in length	Limit deviation at any point against the nominal length	Tolerance for the variation in length
l_n mm	$\pm t_e$ μm	t_v μm	$\pm t_e$ μm	t_v μm
$0,5 \geq l_n \leq 10$	0,2	0,16	0,45	0,3
$10 < l_n \leq 25$	0,3	0,16	0,6	0,3
$25 < l_n \leq 50$	0,4	0,18	0,8	0,3
$50 < l_n \leq 75$	0,5	0,18	1	0,35
$75 < l_n \leq 100$	0,6	0,2	1,2	0,35



STANDARD GAGE - VISUAL 250

Main features

The VISUAL Vision Machine 250 is the answer to a growing demand of industry for workpieces that could not be measured using common tactile precision tools.

The VISUAL 250 is compact but with no compromise on its metrological performances. This manual machine meets most of the market needs for 2D-measurement.

Featuring a solid mechanical construction, the machine can equally be used in the workshop as in the inspection laboratory.

Equipped with VISUAL GAGE – the software that requires less than a half-day training – the VISUAL 250 is a perfect multi-tasking and multi-users inspection means.



■ Exceptional Quality/ Price ratio

The machine has been specially marketed to offer an alternative option in the field of vision at highly optimized costs, whilst guaranteeing optimum accuracy besides a high-quality level.

■ X/Y coordinate tables

Both X and Y coordinate tables have a built-in, hand-operated release system, speeding up any displacement needed to reach the measuring area.

■ Manual zoom

The delivery scope includes an indexable manual zoom with optical magnifications from 0,7x up to 4,5x (6,5:1).

■ Light illumination

The VISUAL 250 is fitted with two illuminations through LEDs – i.e. a ringlight for episcopic illumination (top) along with a diasopic illumination (bottom) for part profile projection. Both are controlled over the software.

■ Z-axis

This coordinate axis is moved from the front of the machine, directly.

■ Laser pointer

A laser pointer is included to make tracing the measurement zone on the part being inspected easier.

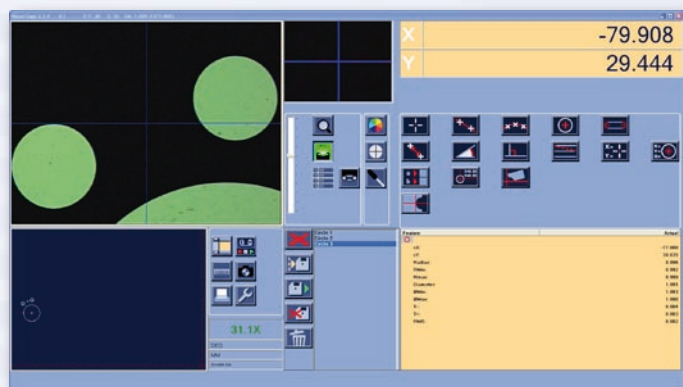
Clamp system

Your VISUAL 250 can be used in conjunction with VISUALFIX. This modular system includes a number of clamping elements available in either of both kits as below:

- VISUALFIX kit, including 35 elements (06860317)
- STANDARD VISUALFIX kit, including 51 elements (06860316)

Software

VISUAL GAGE allows quick and accurate measurement of nearly all geometrical part features. This software can equally be run by a trained operator or a metrologist. It provides the user-friendliness and flexibility needed to create the measurement reports. Training takes just half a day. A clearly arranged User's interface makes this vision machine most easy to use.



Technical data

Order number	06834700
Releasable X- and Y-axis	✓
Measuring range (X/Y)	250 x 150 mm
Z-Displacement	200 mm
Maximum workpiece weight	10 kg
Accuracy	
MPE _{xy} (E _x , E _y)	3,9 µm + L /150* (L in mm)
MPE _{xy} (E _{xy})	4,9 µm + L /150* (L in mm)
*m≤5 kg, uniformly distributed	
Camera and Optics	
CCD colour camera, 752 x 582 pixels	✓
Indexable zoom (0,7x up to 4,5x)	✓
Diascopic illumination, green LED	✓
Ringlight with a white LED	✓
Laser pointer	✓
Additional data	
Calibration	at 10 mm
Weight (w/o monitor and computer)	180 kg
Power supply	115 to 230 Vac ±10%, 50 to 60 Hz
Overall dimensions of the machine alone (LxHxD)	716 x 1015 x 753 mm
Reference temperature	20°C ±1°C
Operating temperature range	10°C to 40°C
Relative humidity	< 80%, non-condensing
VISUAL GAGE application software	✓
Provided with monitor and computer	✓



All modification rights reserved - 10012.057.1009

INSTRUMENTS

MEASURING

Ô\ d a p ^ & @ & } a ÓŠVÒÓPÁŪ] ĚÁ Ě Ě Ě
~ | Ě a i | ^ & } a Ě Ě Ě
í | Ě Ě Ě Ě Ě Ě Ě Ě
ĉ | Ě Ě | Ě | Ě | Ě | Ě Ě Ě
a Ě Ě | Ě | Ě | Ě | Ě Ě Ě
^ | ĉ & @ ^ | ĉ & @ | { Ě |
ĉ ĉ ĉ Ě | ĉ & @ | { Ě |

■ www.standardgage.com

SYSTEMS

PRECISION